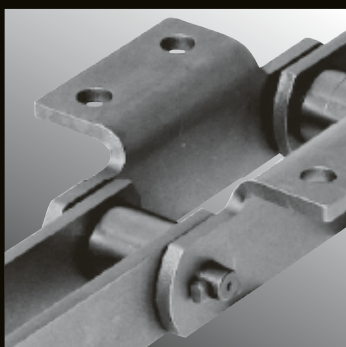
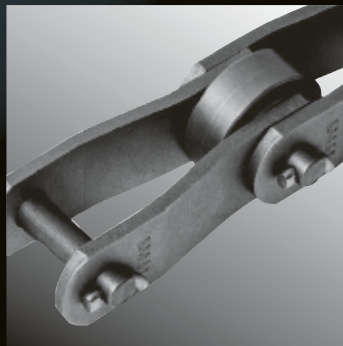
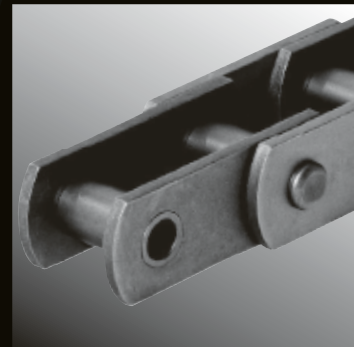
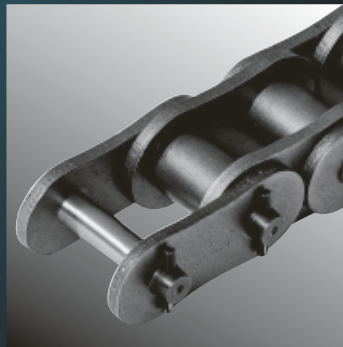
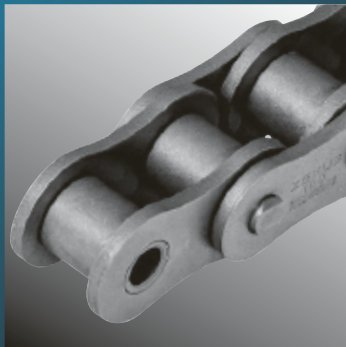
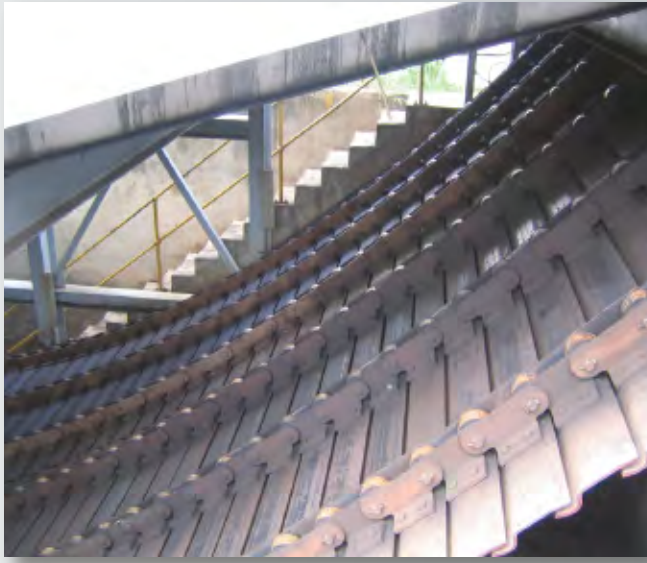


CHAIN DIGEST



ZEXUS CHAIN Co., Ltd.



CHAIN DIGEST

As a comprehensive chain manufacturer, we produce Roller Chains, Conveyor Chains, Cast Chains and many other types of chains.

We provide a full range of manufacturing processes from machining through heat treatment for assembly based on our experience and technologies accumulated over more than 100 years.

We are proud that our products keep contributing to industrial progresses in Japan and abroad.



CAUTION

For use of ZEXUS CHAIN Products, please check our catalogues.

Errors or shortcomings in selection, handling and maintenance can cause major accidents, including chain breakage and conveyor damage.

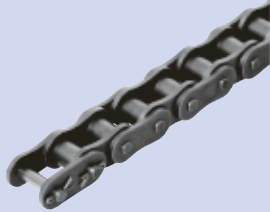
Please refer to our catalogues, the relevant design documents, selection criteria or instruction manuals.

If any points are unclear, please contact the manufacturer for clarification.

Roller Chains

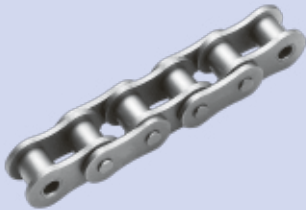
Standard Roller Chains

Standard ANSI/BS Roller Chains adopt Solid Bushing & Roller. It has cylindrical inside and outside bushing walls resulting in full contact to disperse bearing pressure. Less pressure ensures excellent wear resistance.



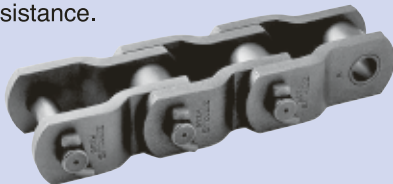
Stainless Steel Roller Chains

Stainless steel roller chain is manufactured of class 300 stainless steel to ANSI/BS dimensional specifications. This chain is ideal for water, highly acidic or alkaline locations, or very high or low temperature where resistance to corrosion and heat is a requirement.



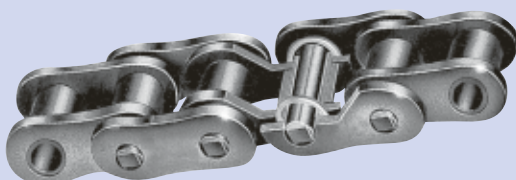
Heavy Duty Drive Chains

Heavy Duty Drive Chains are suitable for power transmission in machines which are subjected to extremely large forces and shocks. Heat-treated special steel is used for their main components and they are machined to high precision. These are offset type chains which give them superior impact resistance.



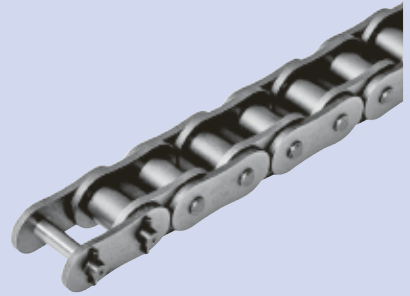
O-ring Chains

O-ring Chains are equipped with O-rings to prevent the loss of oil coverage. This chain is ideal for the industries where it is difficult to lubricate the chain.



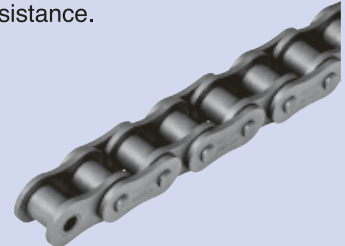
Super Roller Chains

Super Roller Chains are upgraded to a high degree over existing ANSI standard roller chains.



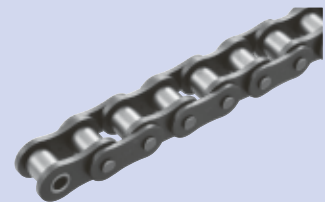
Corrosion Resistant Roller Chains

Corrosion Resistant Roller Chain is manufactured by applying nickel plating or molybdenum coating or bonderizing to ANSI/BS standard roller chains and double-pitch roller chains. They provide superior corrosion resistance.



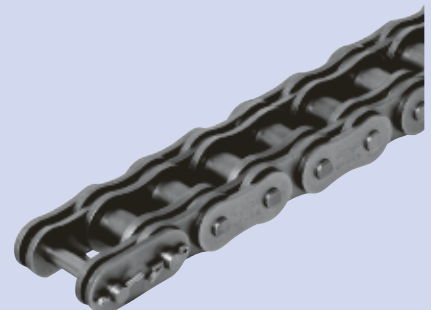
Freedom Series Self-Lubricating Chains

Freedom Series Self-Lubricating Chains perform well in the application without additional lubrication because of oil impregnated sintered steel bushing. This chain is ideal for the industries where cleanliness is critical.



Double Capacity Chains

Double Capacity Chain consists of twice the number of side plates as single strand chain, therefore its working load is close to standard double strand chain.



Conveyor Chains (Small & Large)

Standard Conveyor Chains

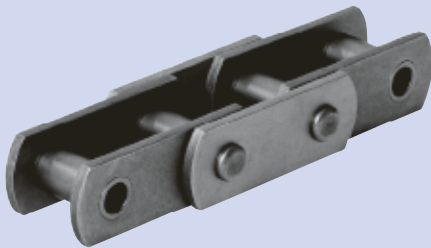
These chains are assembled from precisely-fitted links, bushes and pins, each made of carbon steel or hardened steel, to give accurate dimensions.

Rollers are available in R, F or S roller types to suit different applications.



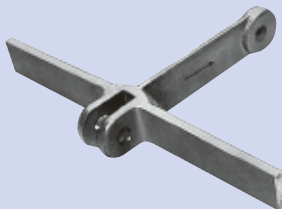
HB type Bushed Chains

These chains have no rollers, and are used in trolley conveyors and log haul conveyors.



Case Conveyor Chains

These chains are used in case conveyors, and we offer various attachments to suit their applications. Suitable materials can be offered depending on the applications.



Conveyor Chains with Attachments

Various attachment can be installed depending on the applications.



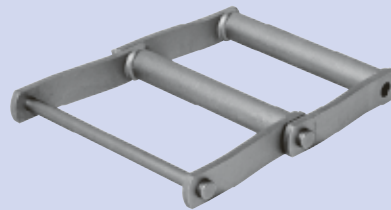
A-type Attachment



K-type Attachment

Steel Drag Chains

Steel Drag Chain has tough strength by simple structure with link plate and barrel welded together. Heavy weight and spacious bottom will fit to carrying heavy and hard materials.



Double Pitch Roller Chains

Small roller chains (C2040~C2160H) have double the pitch with the same pin, bush and roller measurements as standard roller chains, while Large roller chains (C2042~C2162H) have double the external diameter of rollers.



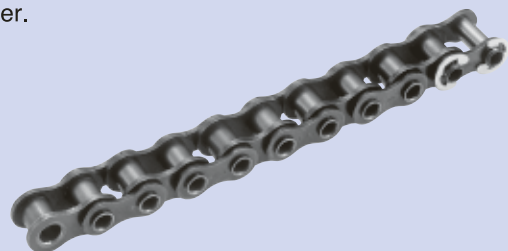
Small Roller Type



Large Roller Type

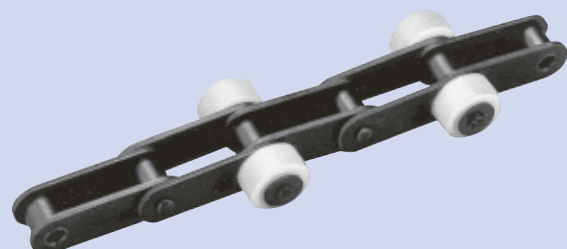
Hollow Pin Chains

These chains are made with special hollow pins, allowing mounting of various types of attachments. They are indicated by the "HP" suffix on the chain number.



Side Roller Chains

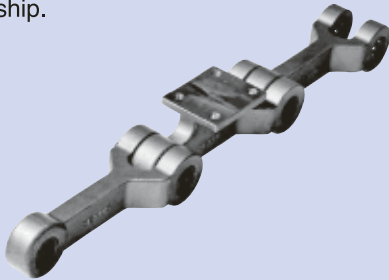
These chains are standard roller chains or double pitch roller chains with side rollers attached to one or both sides, in parallel or staggered patterns. Plastic rollers are used to reduce noise.



Sugar Industry Chains

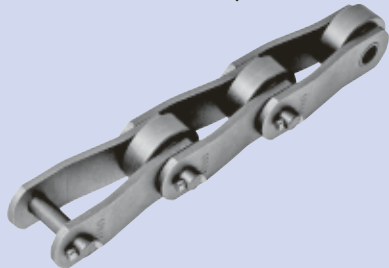
Intermediate Carrier Chain

These chains are used for Sugar Industry. We can offer various types of chains with good workmanship.



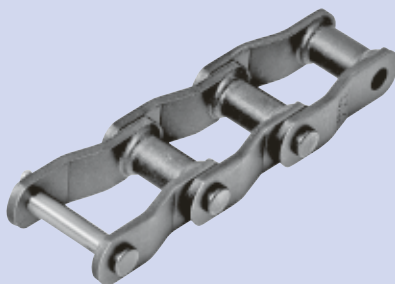
Roller Carrier Chains

Many types of roller carrier chains processing heat treatment, different materials and strength in accordance with customer's requirements are available.



Welded Chains

These chains have welded structure, in which the barrels are welded to the link plates.



Steel Block Chains

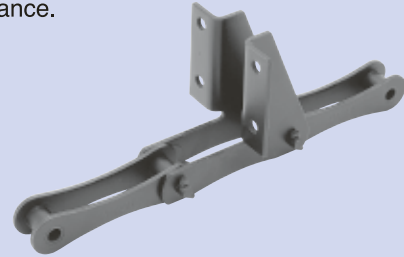
These chains incorporate precisely-machined steel blocks. They are used for carrying heavy items in locations such as steelworks, as well as in applications such as draw benches and sluice gates.



Chains for Water Treatment System

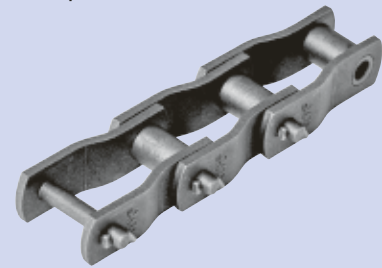
SAV Stainless Steel Chains

These chains are mainly used for agitation of sludge in sewage treatment works. They are made of stainless steel for superior corrosion and wear resistance.



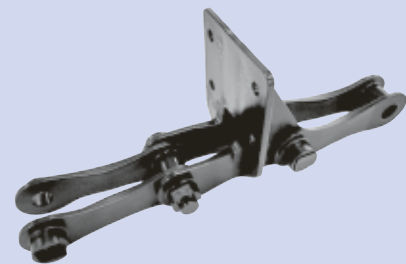
Drive Chains for Sludge Collector

These chains have high dimensional precisions, delivering adequate tensile strength at light weight, together with superior wear and corrosion resistance.



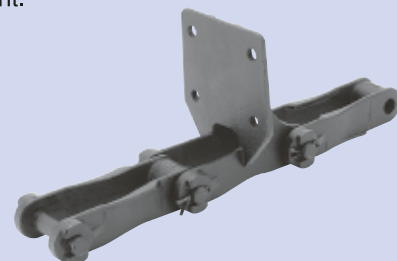
PS720S Plastic Chain

PS720S Plastic Chain has a modified design of conventional models (HPS) that optimizes new easy to use features that are approximately 10% lighter in weight.



TAW Pintle Chains

These chains offer improved wear resistance. There are 730TAW and S730TAW types for use in water treatment.



Casting Chains

■ Detachable Chains

These chains can be detached easily at any point, and their structures are very easy to handle. They run smoothly, with little rusting, even in corrosive environments.



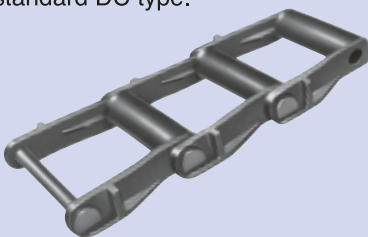
■ Pintle Chains

The barrel and link are a single casting, and the chain is assembled by inserting carbon steel pins. The increased strength, relative to detachable chains allows a wider range of applications.



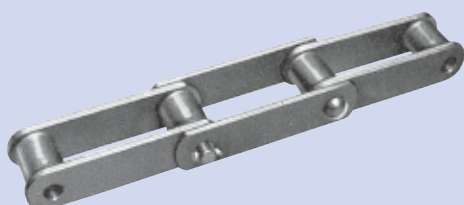
■ Drag Chains

A simple and sturdy structure, making a wide and heavy chain that can carry rough and hard materials. The SD type has better wear resistance than the standard DC type.



■ Combination Chains

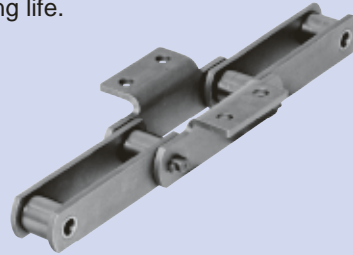
Combination chains are comprised of cast blocks and steel plate links, and are used in various applications.



High Functioning Chains

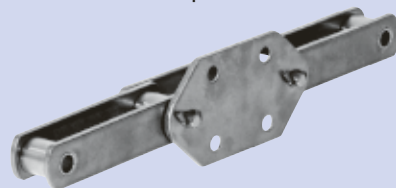
■ VK Series Conveyor Chains

VK series Conveyor Chains reduce wear by optimizing the combination of Pin and Bush material and heat-treatment, suppresses chain elongation and realizes long life.



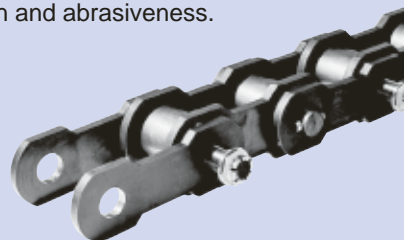
■ VC Series Conveyor Chains

The specifications can be selected according to the environment in which the product will be used, such as cleanliness and corrosion resistance suitable for food conveyance, and abrasion resistance to minimize the contamination of abrasion powder.



■ Continuous Shipping Unloader Chains

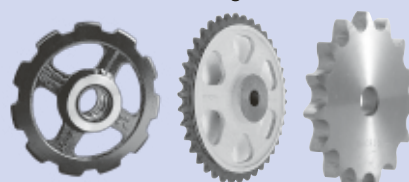
We provide highest reliable continuous bucket unloader chain to work under high velocity, heavy load, high corrosion and abrasiveness.



Chain Accessories

■ Sprocket Wheels

A variety kinds of sprocket wheels are available, such as sprocket wheels for power transmission roller chains, malleable chains and conveyor chains. The chains are driven smoothly with little wear and with small power consumption due to Sprocket Wheel with utmost precision in dimension and high resistance to abrasion.



PRODUCTS & TECHNOLOGY

Roller Chains

- Transmission Roller Chains
- Stainless Steel Roller Chains
- Transmission Double Pitch Roller Chains
- Heavy Series Roller Chains
- Super Roller Chains
- Heavy Duty Drive Chains
- Corrosion Resistant Roller Chains
- Freedom Series Self-Lubricating Chains
- O-ring Chains
- Side Bow Chains

Conveyor Chains (Small & Large)

- Standard Conveyor Chains
- HB Type Bushed Chains
- Steel Drag Chains
- Case Conveyor Chains
- Welded Chains
- Cement Mill Chains
- Steel Mill Chains
- Double Pitch Roller Chains for Conveyor Use
- Roller Chains with Special Attachment
- Hollow Pin Chains

Sugar Industry Chains

- Chains for Feeder Table/Cane Carrier
- Intermediate Carrier/Diffuser/
- Bagasse Carrier/Bucket Elevator etc

Chains for Water Treatment System

- Chains for Sludge Collector
- Grit Tank/Bar Screen

Casting Chains

- Detachable Chains
- Pintle Chains
- Drag Chains
- Combination Chains
- Cast Steel Chains

High Functioning Chains

- VK Series Conveyor Chains
- VC Series Conveyor Chains
- Unloader Chains

Chain Accessories

- Sprocket Wheels
- Snap Idle

ZEXUS CHAIN Co., Ltd.

U R L <https://www.zexuschain.com/en/>
Email kokusai@zexuschain.com

Head Office Shin-Kokusai Building F8, 4-1, Marunouchi 3-Chome,
Chiyoda-ku, Tokyo 100-0005 Japan
Phone: +81-3-4214-1921
Facsimile : +81-3-4212-3328



The contents of this catalog have been simplified.
Please refer to our website for additional product information.

Distributor