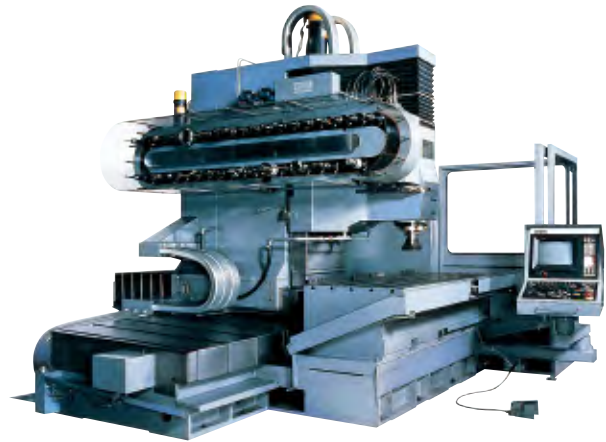


## Chains Pot for ATC (Automatic Tool Changer System)

- This system was developed with the emphasis on high precision and durability for ATC chains used in the ATC equipment of machining centers.
- The pot was developed with special strengthened plastic as the main material, with consideration for the following points:
  1. Changing dimensions over time.
  2. Dimensional precision.
  3. Durability.
  4. Tool extraction force.

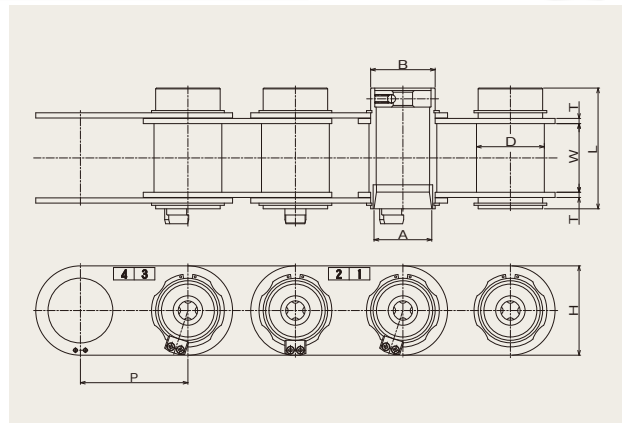


### Types

#### HLP-M (Unit Pot types)

In these types, pots are combined with hollow pins for reduced weight and size.

A special plastic insert is added to the front of the unit pot to improve wear resistance.



Chain No.	Pitch P (mm)	Dimensions (mm)						
		A	B	D	H	L	T	W
HLP90-40M	90	44.45	55	60	82	89	4.0	60
HLP100-40M	100							
HLP125-40M	125							
HLP115-50M	115	69.85	78	82	108	148	6.3	83
HLP130-50M	130							
HLP140-50M	140							
HLP160-50M	160							

Note: 1. We can also manufacture to special dimensions.



# Chains for Special Applications

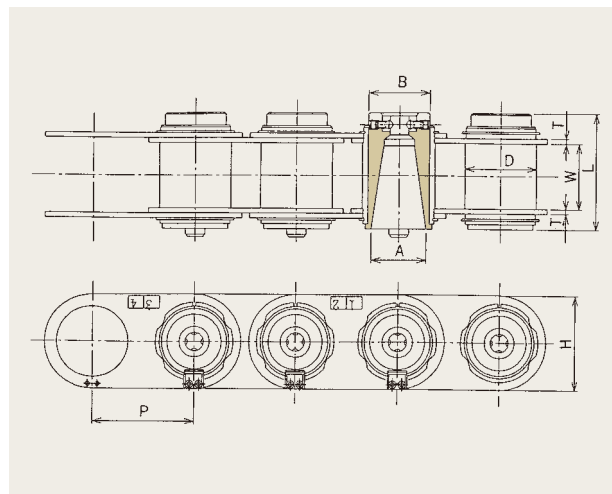
## Chains and Pots for ATC (Automatic Tool Changer) Systems

### HLP-F type (Plastic Pot type)

Plastic pots are built into the hollow pins of the chain.

#### Features

1. Pots are easy to change.
2. Pots are made from special plastic for adequate durability.



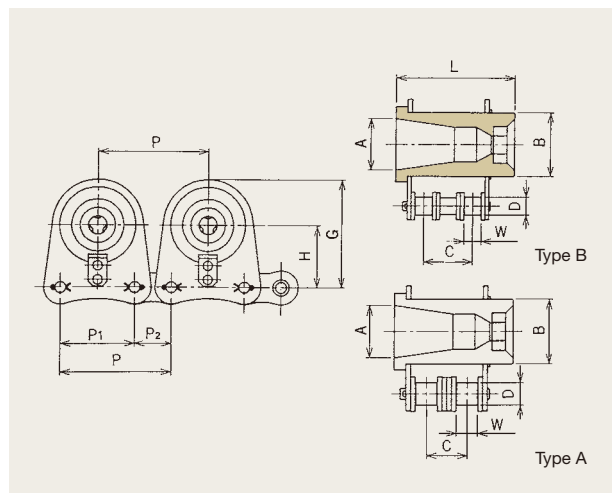
Chain No.	Pitch P (mm)	Dimensions (mm)						
		A	B	D	H	L	T	W
HLP90-40F	90	44.45	55	68	88	105	4.0	60
HLP100-40F	100					105		
HLP125-40F	120					105		
HLP130-50F	130	69.85	78	92	120	146	6.3	83
HLP140-50F	140					144		
HLP160-50F	160					144		

### SAK-F type (Plastic Pot type)

Similar to the structure of the SAW type, with pots built into unitary chains.

#### Features

1. Light and economical, offering stability and rigidity.
2. Easy to position the tools.



Chain No.	Pitch (mm)			Dimensions (mm)							
	P	P <sub>1</sub>	P <sub>2</sub>	A	B	C	D	G	H	L	W
SAK100-40F	95.25	63.5	31.75	44.45	55	53.18	19.05	92.0	53.0	102	19.05
SAK120-50F	114.30	76.2	38.10	69.85	78	77.10	22.23	115.3	68.3	148	25.40
SAK140-50F	133.35	88.9	44.45	69.85	78	73.60	25.4	136.0	80.0	148	25.40

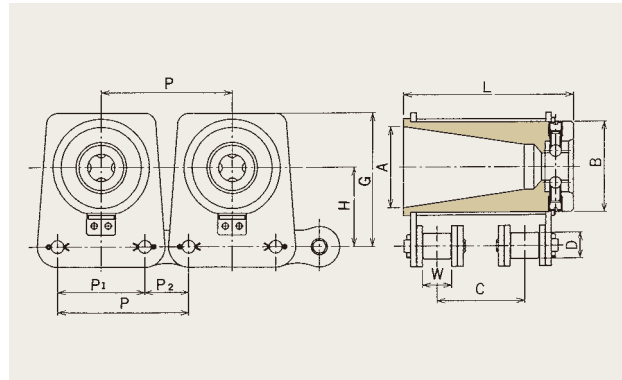
## Chains and Pots for ATC (Automatic Tool Changer) Systems

### SAW-F type (Plastic Pot type)

Plastic pots are built into a chain that splits between left and right sides.

#### Features

1. Lightweight and economical.
2. Easy to position the tools.



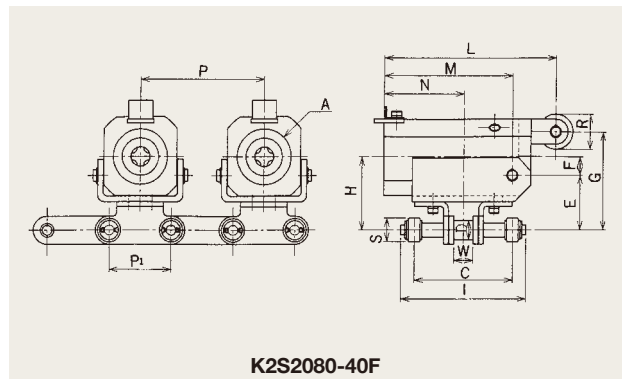
Chain No.	Pitch (mm)			Dimensions (mm)							
	P	P <sub>1</sub>	P <sub>2</sub>	A	B	C	D	G	H	L	W
SAW120-50F	114.30	76.2	38.10	69.85	78	52.6	22.23	115.3	68.3	155	25.4
SAW120-50F	114.30	76.2	38.10	69.85	78	77.1	22.23	136.0	80.0	148	25.4
SAW140-50F	133.35	88.9	44.45	69.85	78	73.6	25.40	136.0	80.0	148	25.4

### K2S-F type (Plastic Pot type)

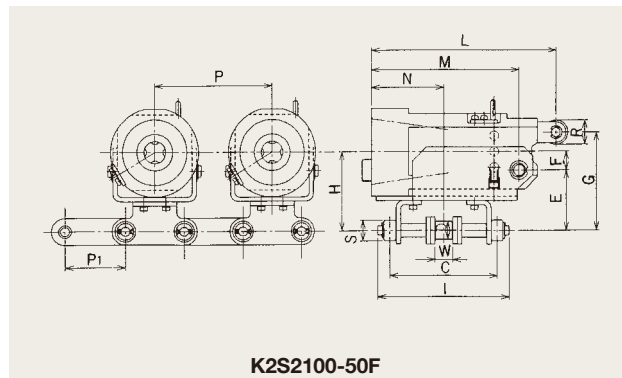
This type has a chain attachment with a pot tipping function, so that it can be used in upright machining centers.

#### Features

1. The tool changing system can be simplified.
2. The chain has side rollers, so the tools are prevented from tilting or swaying.



K2S2080-40F



K2S2100-50F

Chain No.	Pitch (mm)		Dimensions (mm)													
	P	P <sub>1</sub>	A	C	D	E	F	G	H	I	L	M	N	R	S	W
K2S2080-40F	101.6	50.8	44.45	70	15.88	43.5	15	78.5	58.5	92.6	140	105	60.00	28	19.05	15.88
K2S2100-50F	127.0	63.5	69.85	117	19.05	70.0	20	120.0	90.0	143.0	200	150	91.25	28	22.22	19.40