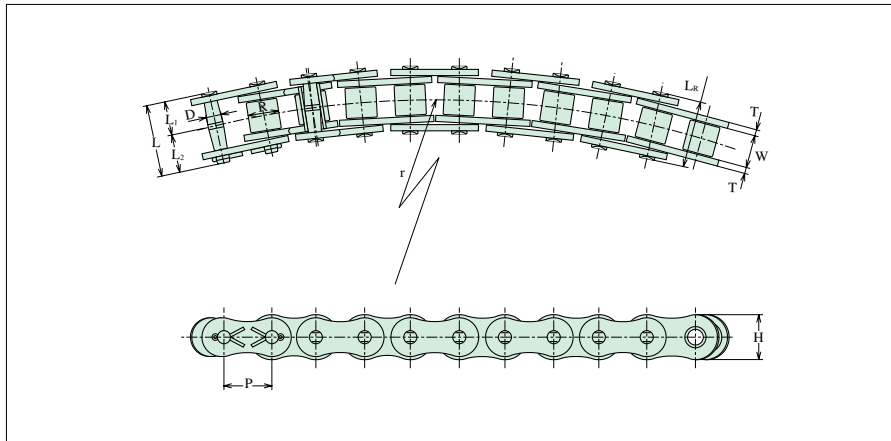


Side Bow Chains



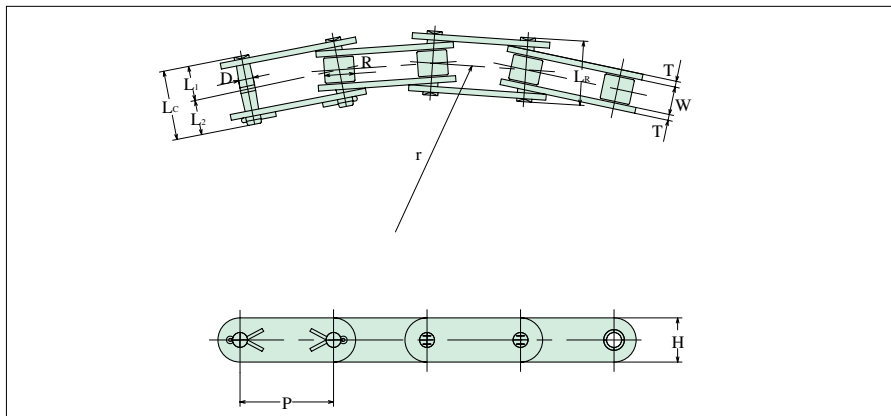
In Side Bow Chains, pin-to-bushing clearance are much greater than in standard roller chains and double pitch roller chains, and these, plus the clearances between inner and outer links, enable the chain to be used while bowed transversely. Basic dimensions conform to ANSI chains dimensions, enable standard sprockets to be utilized.

SB STANDARD

Chain No.	Dimensions - mm											Average Ultimate Strength kN	Maximum Allowable Load kN	Average Chain Weight kg/m
	Pitch P	Roller		Pin				Plate		Min. Curve Radius r				
		Width W	Dia. R	Out Dia. D	Length			Height H	Thick. T					
				LR	LC	L1	L2							
40SB	12.70	7.95	7.92	3.58	16.90	18.90	8.50	10.40	11.70	1.50	350	14.90	1.77	0.63
50SB	15.875	9.53	10.16	4.45	21.10	23.10	10.60	12.50	14.60	2.00	400	22.10	3.14	1.03
60SB	19.05	12.70	11.91	5.08	26.30	28.10	13.20	14.90	17.50	2.40	500	29.40	4.22	1.46
80SB	25.40	15.88	15.88	7.13	33.40	36.40	16.70	19.70	23.40	3.20	600	57.90	7.65	2.42

○Stainless steel, nickel plated, and with attachments are supplied on request.

Side Bow Double Pitch Chains



SB DOUBLE PITCH

Chain No.	Dimensions - mm											Average Ultimate Strength kN	Maximum Allowable Load kN	Average Chain Weight kg/m
	Pitch P	Roller		Pin				Plate		Min. Curve Radius r				
		Width W	Dia. R	Out Dia. D	Length			Height H	Thick. T					
				LR	LC	L1	L2							
C 2040SB	25.40	7.95	7.92	3.58	16.90	18.90	8.50	10.40	11.40	1.50	700	14.90	1.77	0.48
C 2050SB	31.75	9.53	10.16	4.45	21.10	23.10	10.60	12.50	15.00	2.00	800	22.10	3.14	0.82
C 2060SB	38.10	12.70	11.91	5.08	26.30	28.10	13.20	14.90	17.00	2.40	1000	29.40	4.22	1.20
C 2042SB	25.40	7.95	15.88	3.58	16.90	18.90	8.50	10.40	11.40	1.50	700	14.90	1.77	0.82
C 2052SB	31.75	9.53	19.05	4.45	21.10	23.10	10.60	12.50	15.00	2.00	800	22.10	3.14	1.26
C 2062SB	38.10	12.70	22.23	5.08	26.30	28.10	13.20	14.90	17.00	2.40	1000	29.40	4.22	2.01