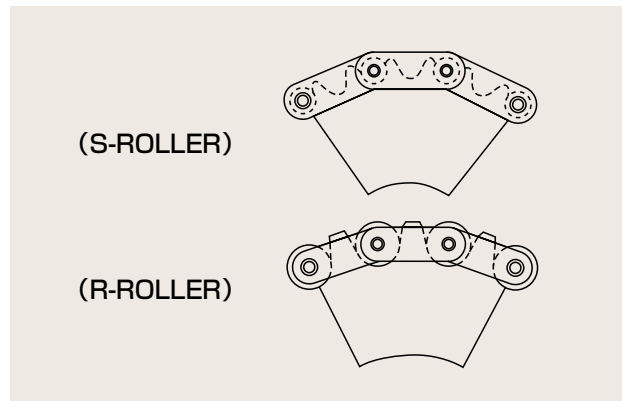


# Steel Conveyor Chains

## Sprockets for Double Pitch Roller Chains

Right side picture shows sprockets engage with chain in the alternate teeth. The teeth of sprocket actually engaged with chain is called “No. of Working Teeth” and apparently engaged teeth is called “No. of Teeth.” In case that “No. of Teeth” is odd number, roller is engaged with different teeth every one rotation and it offers longer life and little wear. For S-Roller Double Pitch Roller Chain, standard sprocket can be used in case that “No. of Teeth” is more than thirty.

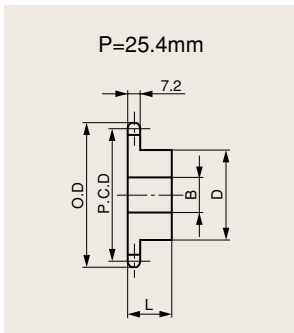


B type sprocket wheel can be machined as requested.

Sprockets for C2140, C2160, C2102, C2122, C2142 and C2162 are made to order.

### C2040 Sprocket (2040 S-ROLLER)

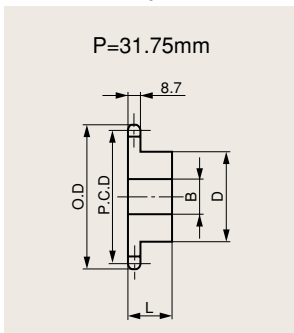
(mm)



No. of Teeth	No. of Working Teeth	Pitch Circle Dia.	Outer Dia.	Bore Dia. B		Hub		Mass (kg)
		P.C.D	O.D	Pilot Bore	Maximum	Dia. D	Width L	
19	9 1/2	78.23	84	13	38	60	25	0.61
21	10 1/2	86.17	92	13	45	69	25	0.82
23	11 1/2	94.14	100	13	51	77	25	0.98
25	12 1/2	102.14	108	13	42	63	25	0.83

### C2050 Sprocket (2050 S-ROLLER)

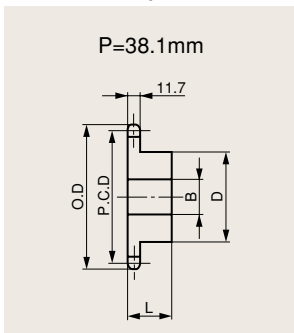
(mm)



No. of Teeth	No. of Working Teeth	Pitch Circle Dia.	Outer Dia.	Bore Dia. B		Hub		Mass (kg)
		P.C.D	O.D	Pilot Bore	Maximum	Dia. D	Width L	
19	9 1/2	97.78	104	13	48	73	28	1.06
21	10 1/2	107.72	115	13	48	73	28	1.16
23	11 1/2	117.68	125	16	48	73	28	1.27
25	12 1/2	127.67	135	16	48	73	28	1.40

### C2060 Sprocket (2060 S-ROLLER)

(mm)

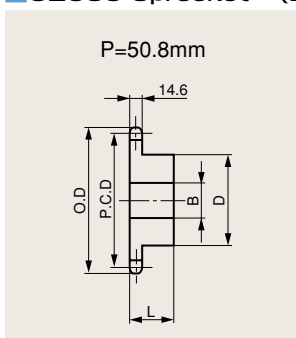


No. of Teeth	No. of Working Teeth	Pitch Circle Dia.	Outer Dia.	Bore Dia. B		Hub		Mass (kg)
		P.C.D	O.D	Pilot Bore	Maximum	Dia. D	Width L	
19	9 1/2	117.34	126	16	55	83	40	2.03
21	10 1/2	129.26	138	16	55	83	40	2.23
23	11 1/2	141.22	150	16	55	83	45	2.56
25	12 1/2	153.20	162	16	55	83	45	2.81

Note: Material is Carbon Steel

**C2080 Sprocket (2080 S-ROLLER)**

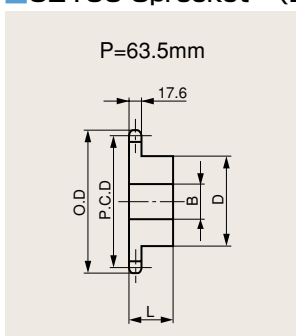
(mm)



No. of Teeth	No. of Working Teeth	Pitch Circle Dia.	Outer Dia.	Bore Dia. B		Hub		Mass (kg)
		P.C.D	O.D	Pilot Bore	Maximum	Dia. D	Width L	
19	9 1/2	156.45	167	20	63	93	40	3.24
21	10 1/2	172.35	184	20	63	93	40	3.68
23	11 1/2	188.29	200	20	75	107	45	4.88
25	12 1/2	204.27	216	20	75	107	45	5.43

**C2100 Sprocket (2100 S-ROLLER)**

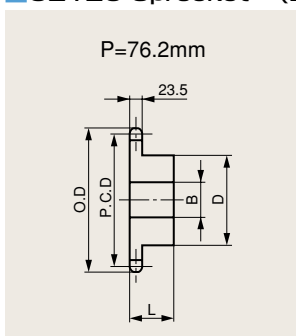
(mm)



No. of Teeth	No. of Working Teeth	Pitch Circle Dia.	Outer Dia.	Bore Dia. B		Hub		Mass (kg)
		P.C.D	O.D	Pilot Bore	Maximum	Dia. D	Width L	
19	9 1/2	195.57	209	20	75	107	50	5.91
21	10 1/2	215.43	230	20	75	107	50	6.76
23	11 1/2	235.36	250	20	80	117	56	8.63
25	12 1/2	255.34	270	20	80	117	56	9.65

**C2120 Sprocket (2120 S-ROLLER)**

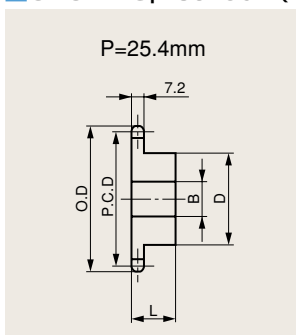
(mm)



No. of Teeth	No. of Working Teeth	Pitch Circle Dia.	Outer Dia.	Bore Dia. B		Hub		Mass (kg)
		P.C.D	O.D	Pilot Bore	Maximum	Dia. D	Width L	
19	9 1/2	234.68	251	33	80	117	63	10.7

**C2042 Sprocket (2040 R-ROLLER)**

(mm)



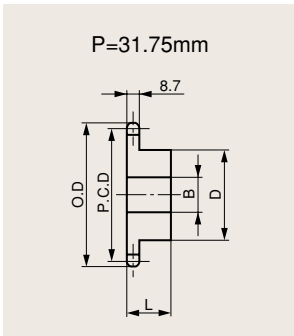
No. of Teeth	Pitch Circle Dia.	Outer Dia.	Bore Dia. B		Hub		Mass (kg)
	P.C.D	O.D	Pilot Bore	Maximum	Dia. D	Width L	
10	82.19	93	16	42	63	25	0.70
11	90.16	102	16	42	63	25	0.77
12	98.14	110	16	42	63	25	0.84
13	106.14	118	16	42	63	25	0.97
14	114.15	127	16	42	63	25	1.07
15	122.17	135	16	45	68	28	1.26
16	130.2	143	20	45	68	28	1.30
17	138.23	151	20	45	68	28	1.35
18	146.27	159	20	45	68	28	1.45
19	154.32	167	20	45	68	28	1.60
20	162.37	175	20	45	68	28	1.80

Note: Material is Carbon Steel

# Steel Conveyor Chains

## C2052 Sprocket (2050 R-ROLLER)

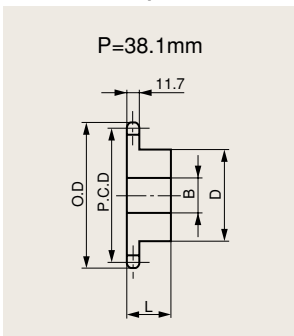
(mm)



No. of Teeth	Pitch Circle Dia.	Outer Dia.	Bore Dia. B		Hub		Mass (kg)
	P.C.D	O.D	Pilot Bore	Maximum	Dia. D	Width L	
10	102.74	116	20	48	73	28	1.10
11	112.7	127	20	48	73	28	1.20
12	122.67	138	20	48	73	28	1.30
13	132.67	148	20	48	73	28	1.50
14	142.68	158	20	48	73	28	1.90
15	152.71	168	20	48	73	28	2.00
16	162.74	179	20	48	73	28	2.30
17	172.79	189	20	55	83	35	2.45
18	182.84	199	20	55	83	35	2.75
19	192.9	209	20	55	83	35	2.95
20	202.96	220	20	55	83	35	3.15

## C2062 Sprocket (2060 R-ROLLER)

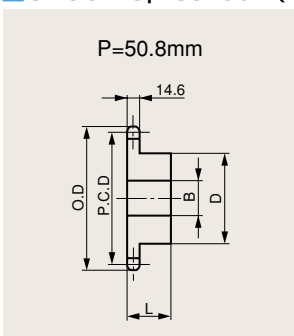
(mm)



No. of Teeth	Pitch Circle Dia.	Outer Dia.	Bore Dia. B		Hub		Mass (kg)
	P.C.D	O.D	Pilot Bore	Maximum	Dia. D	Width L	
10	123.29	140	20	50	78	45	2.50
11	135.24	153	20	55	83	45	2.60
12	147.21	165	20	55	83	45	2.80
13	159.2	177	26	55	83	45	3.10
14	171.22	190	26	55	83	45	3.60
15	183.25	202	26	55	83	45	3.90
16	195.29	214	26	55	83	45	4.20
17	207.35	227	26	63	93	45	4.60
18	219.41	239	26	63	93	45	5.00
19	231.48	251	26	63	93	45	5.50
20	243.55	263	26	63	93	45	6.00

## C2082 Sprocket (2080 R-ROLLER)

(mm)



No. of Teeth	Pitch Circle Dia.	Outer Dia.	Bore Dia. B		Hub		Mass (kg)
	P.C.D	O.D	Pilot Bore	Maximum	Dia. D	Width L	
10	164.39	187	20	63	93	40	3.29
11	180.31	204	26	75	107	45	4.42
12	196.28	220	26	75	107	45	4.94
13	212.27	237	26	75	107	45	5.46
14	228.3	253	26	75	107	45	6.09
15	244.33	269	26	75	107	45	6.70
16	260.39	286	26	75	107	45	7.42
17	276.46	302	26	75	107	45	8.12
18	292.55	319	26	80	117	50	9.76
19	308.64	335	26	80	117	50	10.56
20	324.74	351	26	80	117	50	11.46

Note: Material is Carbon Steel