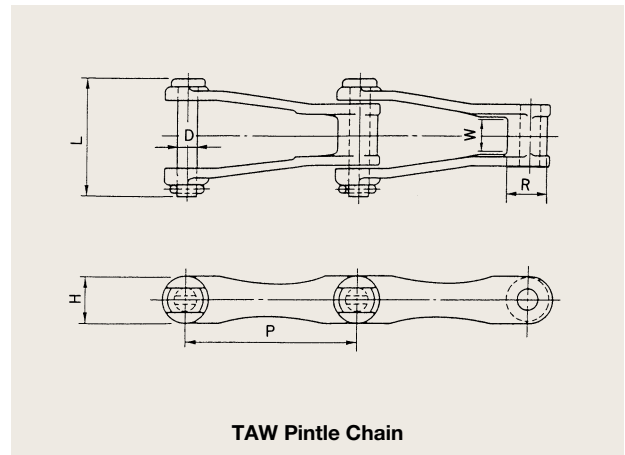
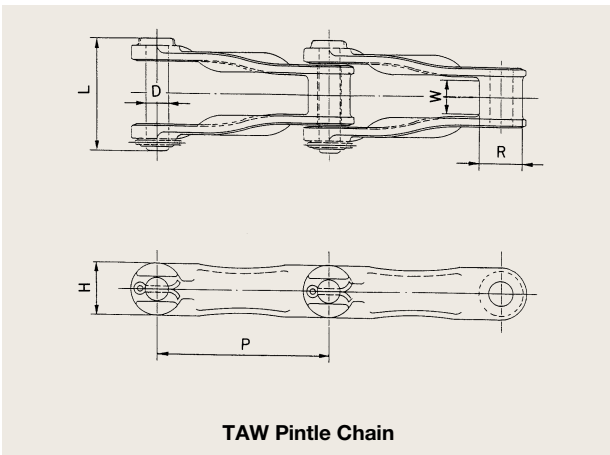
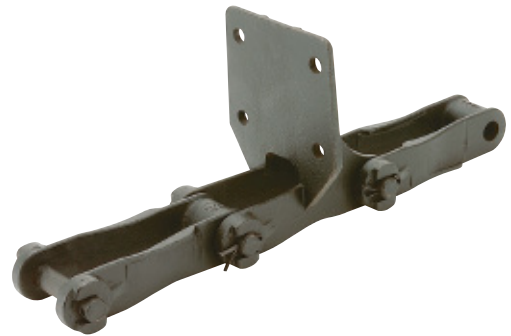


TAW Pintle Chains

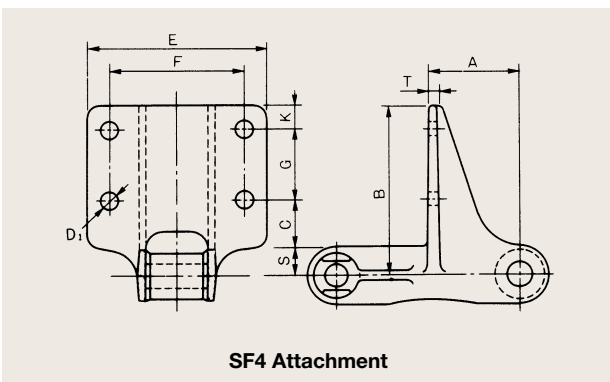
TAW chains are cast chains designed for wear and corrosion resistance, to serve as main chains for sludge collector.

The wear resistance of these chains is enhanced by special heat treatment.



TAW Pintle Chains

Chain No.	Pitch P		Barrel Dia. R (mm)	Sprocket Tooth Width W (mm)	Pin		Link Plate Height H (mm)	Average Tensile Strength		Assured Tensile Strength		Mass (kg/m)
	(mm)	(in)			Dia. D (mm)	Length L (mm)		(kN)	(kgf)	(kN)	(kgf)	
730TAW	152.4	6	38.1	29	19.0	99.5	44.5	186	19000	167	17100	9.45
730TAWN	152.4	6	38.0	29	17.5	101.0	38	186	19000	167	17100	8.53
S730TAW	152.4	6	40.0	35	20.6	108.5	45.0	186	19000	167	17100	11.09



SF4 Attachments

Chain No.	Dimensions (mm)										Added Mass per Attachment (kg)
	A	B	C	D ₁	E	F	G	K	S	T	
730TAW	76	160.0	38.0	14	140	100	75	25	22	9	1.61
730TAWN	76	160.0	41.0	14	150	100	75	25	19	9	1.05
S730TAW	76	142.5	40.0	14	150	112	60	20	22.5	9	1.48