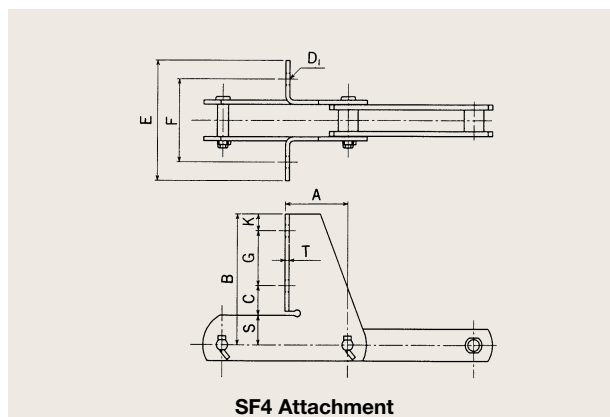
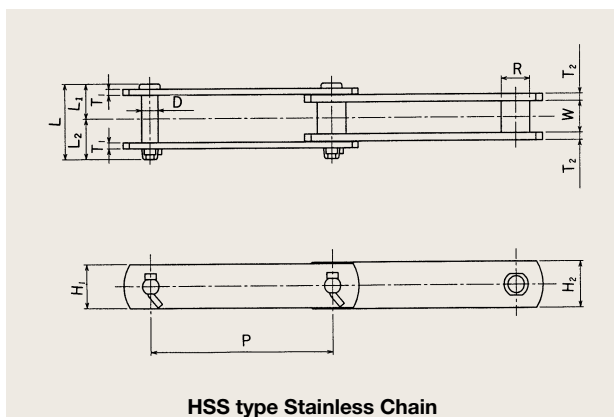
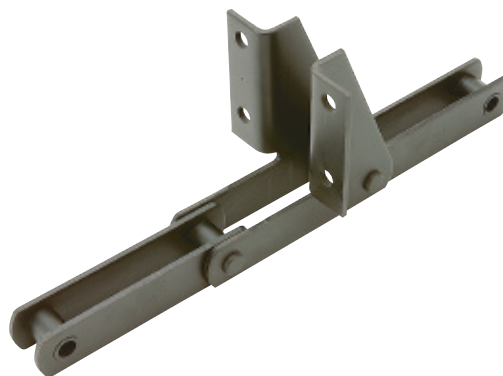


HSS type Stainless Chains

The components of these chains are made from carefully selected 400-class stainless steel, shaped in a high-precision press and specially heat treated. Dimensional precision is high, and the lightweight design has sufficient tensile strength. These chains also offer superior corrosion and wear resistance.



HSS type Stainless Chains

Chain No.	Pitch P (mm)	Bush Dia. R (mm)	Inner Width W (mm)	Pin			Pin Link		Bush Link		Average Tensile Strength		Assured Tensile Strength		Mass (kg/m)	
				Dia. D (mm)	Length		Height H1 (mm)	Thickness T1 (mm)	Height H2 (mm)	Thickness T2 (mm)	(kN)	(kgf)	(kN)	(kgf)		
					L (mm)	L1 (mm)										L2 (mm)
HSS15215-B	152.4	24	26	13.5	62	28.8	33.2	36	5	38	6	147	15000	137	14000	4.6
HSS15219-B	152.4	26	30	14.5	72	32.5	39.5	38	6	44	6	186	19000	172	17500	5.7
HSS15219-B special	152.4	30	30	14.5	72	32.5	39.5	38	6	44	6	186	19000	172	17500	6.0

SF4 Attachments

Chain No.	Dimensions (mm)											Added Mass per Attachment (kg)	Notes
	A	B	C	D ₁	E	F	G	K	S	T			
HSS15215	76	155	35	14	145	100	65	20	35	5	1.5	Standard type	
	76	140	38	14	145	100	60	20	22	5	0.8	Equivalent to 720	
	76	155	40	14	145	100	75	17.5	22.5	5	1.0	Equivalent to 730	
	76	155	40	14	145	112	60	32.5	22.5	5	1.0	Equivalent to S730	
HSS15219	76	155	32	14	140	100	65	20	38	6	1.6	Standard type	
	76	140	38	14	140	100	60	20	22	6	1.1	Equivalent to 720	
	76	155	40	14	140	100	75	17.5	22.5	6	1.2	Equivalent to 730	
	76	142.5	40	14	150	112	60	20	22.5	6	1.1	Equivalent to S730	