

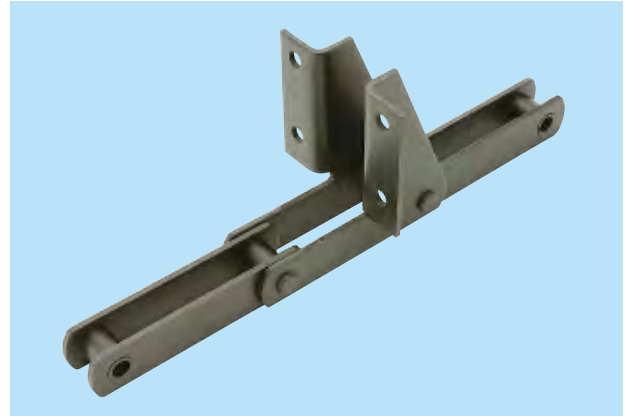
Chains for Water Treatment Systems

Class 400 Stainless Chain

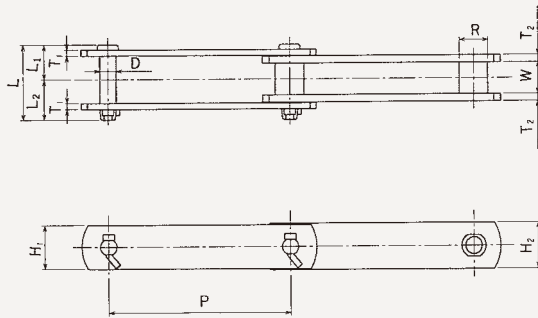
HSS Type Stainless Chain

Class 400 Stainless Steel

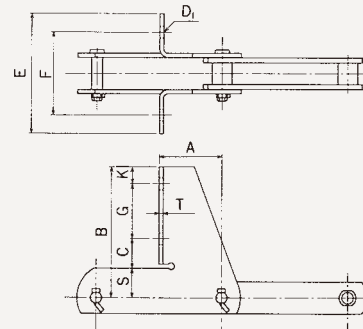
The components of these chains are made from carefully selected 400-class stainless steel, shaped in a high-precision press and specially heat treated. Dimensional precision is high, and the lightweight design has sufficient tensile strength. These chains also offer superior corrosion and wear resistance.



HSS Type Stainless Chain



SF4 Attachment



HSS Type Stainless Chain

Chain No.	Pitch P (mm)	Bushing diameter R (mm)	Inner link inside width W (mm)	Pin				Pin link		Bushing link		Average tensile strength		Assured tensile strength		Weight (kg/m)
				Diameter D (mm)	L (mm)	L1 (mm)	L2 (mm)	Height H1 (mm)	Thickness T1 (mm)	Height H2 (mm)	Thickness T2 (mm)					
HSS15215-B	152.4	24	26	13.5	62	28.8	33.2	36	5	38	6	147	15000	137.3	14000	4.6
HSS15219-B	152.4	26	30	14.5	72	32.5	39.5	38	6	44	6	186	19000	172	17500	5.7
HSS15219-Bspecial	152.4	30	30	14.5	72	32.5	39.5	38	6	44	6	186	19000	172	17500	6.0

SF4 Attachment

Chain No.	Dimensions (mm)										Additional weight per piece (kg)	Comments
	A	B	C	D1	E	F	G	K	S	T		
HSS15215	76	155	35	14	145	100	65	20	35	5	1.5	Standard type*
	76	140	38	14	145	100	60	20	22	5	0.8	Equivalent to 720
	76	155	40	14	145	100	75	17.5	22.5	5	1.0	Equivalent to 730
	76	155	40	14	145	112	60	32.5	22.5	5	1.0	Equivalent to S730
HSS15219	76	155	32	14	140	100	65	20	38	6	1.6	Standard type*
	76	140	38	14	140	100	60	20	22	6	1.1	Equivalent to 720
	76	155	40	14	140	100	75	17.5	22.5	6	1.2	Equivalent to 730
	76	142.5	40	14	150	112	60	20	22.5	6	1.1	Equivalent to S730

*Standard type recommended

Caution

- Take note of the attachment dimensions when switching from a pintle chain to a stainless chain.