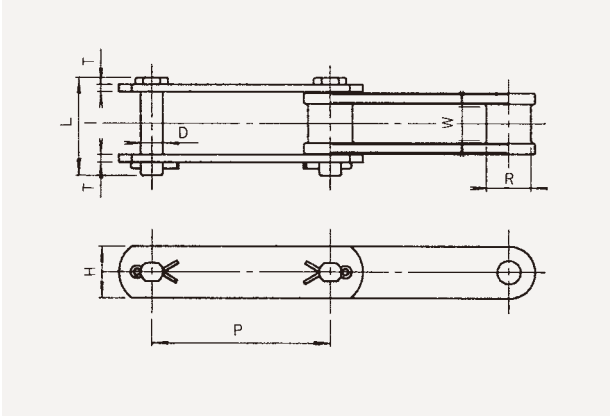


TAW Combination Chain

These are the main chains for grit tank collectors and dischargers.

The blocks are TAW-processed steel castings to improve wear resistance, and the link plates and pins are made from heat-treated special alloy steel, for high strength and toughness.

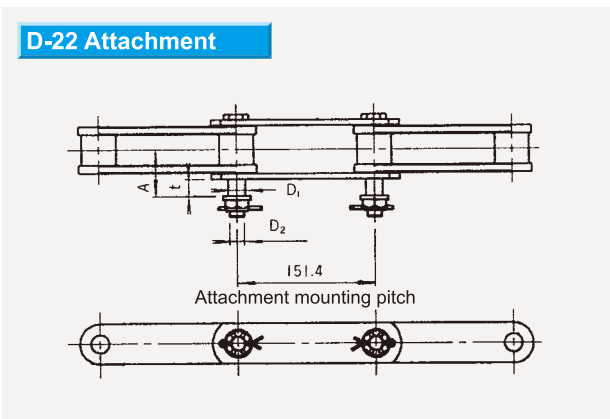


TAW Combination Chain

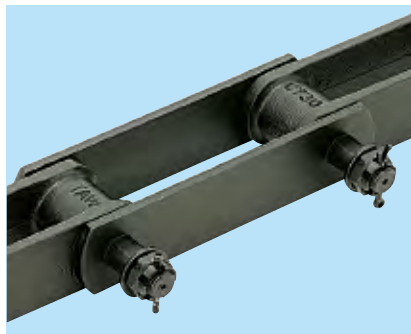
Chain No.	Pitch P		Dimensions (mm)						Qty. in series	Average tensile strength		Assured tensile strength		Weight (kg)	
	(mm)	(in)	R	W	D	L	H	T		(kN)	(kgf)	(kN)	(kgf)	Series	1m
C730TAW	152.4	6	38.1	29	19	84	44.5	6.3	20	245	25000	220	22500	29.1	9.65
C112TAW	152.4	6	38.0	46	19	102	50.8	6.3	20	294	30000	264	27000	34.0	11.15
C113TAW	152.4	6	44.5	56	22	128	50.8	9.5	20	392	40000	353	36000	50.8	17.4

Attachments for TAW Combination Chain

D-22 Attachment



This is an attachment for easily mounting a sand lifter bucket.



D-22 Attachment

Chain No.	Dimensions (mm)				Weight/pair (kg)
	A	D1	D2	t	
C730TAW	52.3	18.8	M16	19	3.13
C112TAW	60.8	18.8	M16	19	3.58
C113TAW	78.0	21.8	M20	25	5.5

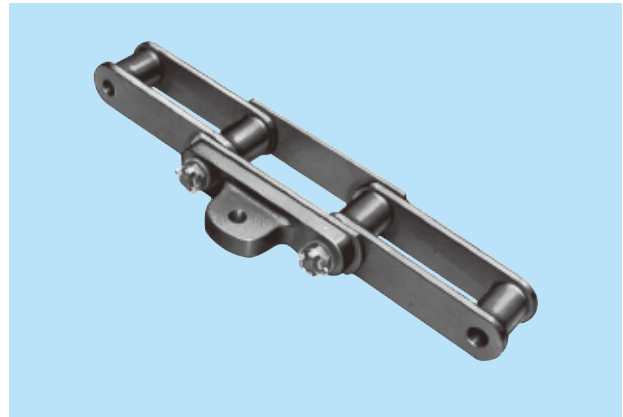
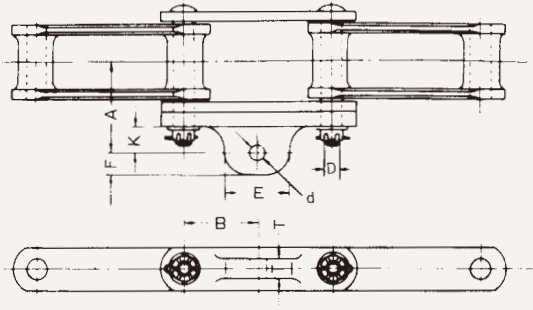
Caution

- Attachments consist of a single pair with two links.

Chains for Water Treatment Systems

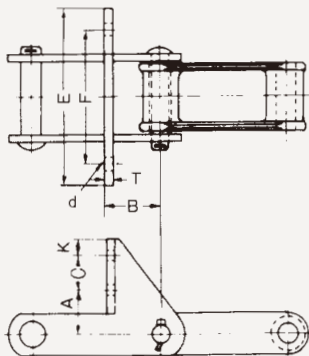
Attachments for TAW Combination Chain

A42S Attachment



Chain No.	Dimensions (mm)								Weight/pair (kg)
	A	B	d	D	E	F	K	T	
C730TAW	79.3	76.2	17	M16	68	22	27.0	24	4.85
C112TAW	90.0	76.2	20	M16	80	25	32.2	28	5.56
C113TAW	113.0	76.2	23	M20	80	28	35.0	28	8.21

SF4 Attachment



Chain No.	Dimensions (mm)								Weight/pair (kg)
	A	B	C	d	E	F	K	T	
C730TAW	55	76.3	40	15	140	100	22.8	6.3	4.88
C112TAW	55	66.3	40	14	200	140	19.6	6.3	4.75
C113TAW	55	67.0	40	15	220	160	19.6	9.5	6.23

Caution

- Attachments consist of a single pair with two links.