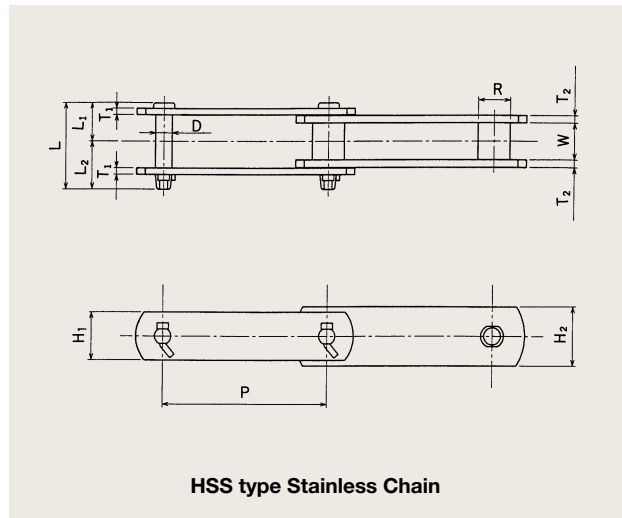


## Chains for Grit Tanks

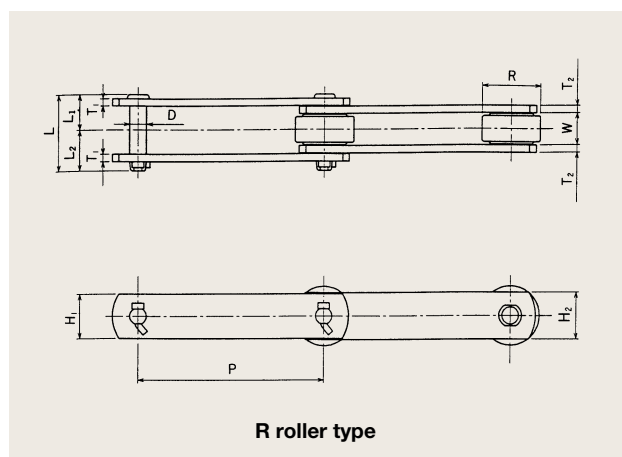
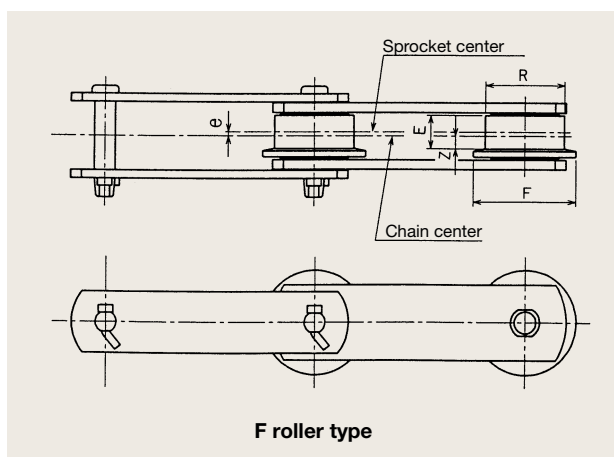
### HSS type Stainless Chains

Chain components are made from carefully selected 400-class stainless steel, which is accurately pressed and specially heat treated. They have excellent dimensional precision, and are designed to deliver adequate tensile strength at low weight. They also offer superior corrosion and wear resistance. We offer SF4 attachments for mounting collector flights, D-22 attachments for mounting dredger buckets, and T-1 and A-2 attachments for mounting debris remover rakes.



### HSS type Stainless Chains

Chain No.	Pitch P (mm)	Roller (bush) Dia. R (mm)				Inner Width W (mm)	Pin				PinLink		Bush Link		Average Tensile Strength		Assured Tensile Strength		Mass (kg/m)			
		Bushed type	S roller type	F roller type	R roller type		Dia. D (mm)	Length			Height H1 (mm)	Thickness T1 (mm)	Height H2 (mm)	Thickness T2 (mm)	(kN)	(kgf)	(kN)	(kgf)	B	S	F	R
								L (mm)	L1 (mm)	L2 (mm)												
HSS15215	152.4	24	29	48	48	26	13.5	62	28.8	33.2	36	5	38	6	147	15000	137	14000	4.6	4.9	6.3	6.2
HSS15219	152.4	26	32	50	50	30	14.5	72	32.5	39.5	38	6	44	6	186	19000	172	17500	5.7	6.0	7.9	7.7
HSS15225	152.4	30	36	58	58	34	15.3	80	36	44	44	6	54	7	245	25000	226	23000	8.0	8.5	12.0	11.3
HSS15235	152.4	36	42	70	70	38	18.9	88	40	48	54	7	60	7	343	35000	314	32000	10.7	11.4	16.5	15.2
HSS15248	152.4	-	44.5	80	80	57.2	22.1	120	55.6	64.4	63.5	10	63.5	10	490	50000	441	45000	-	19.1	28.8	28.3



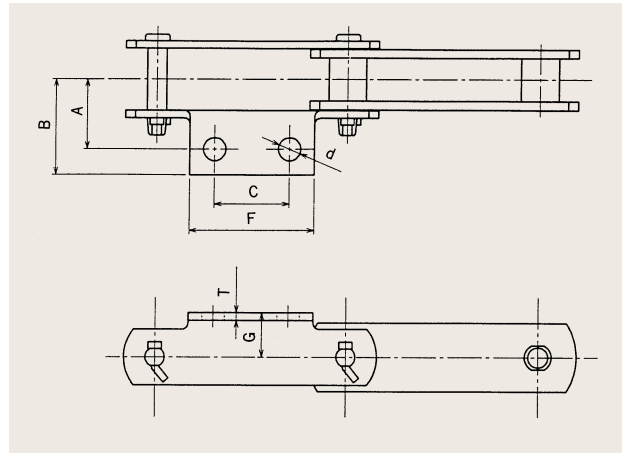
### HSS type Stainless Chains (F roller type)

Chain No.	Dimensions (mm)				
	R	E	e	F	Z
HSS15215	48	16	2.25	60	5.75
HSS15219	50	20	3.0	65	7.0
HSS15225	58	24	3.0	75	9.0
HSS15235	70	25	4.0	90	8.5
HSS15248	80	38	6.0	95	13.0

# Chains for Water Treatment Systems

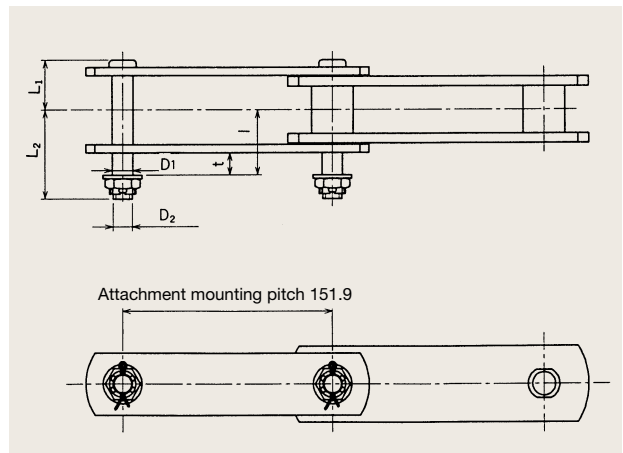
## Attachments for HSS type Stainless Chains

### A-2 Attachment



Chain No.	Dimensions (mm)							Added Mass per Attachment (kg)
	A	B	C	d	F	G	T	
HSS15215	45	60	60	14	90	30	5	0.16
HSS15219	50	65	60	14	90	32	6	0.21
HSS15225	55	75	60	18	100	35	6	0.27
HSS15235	65	90	60	18	100	42	7	0.39

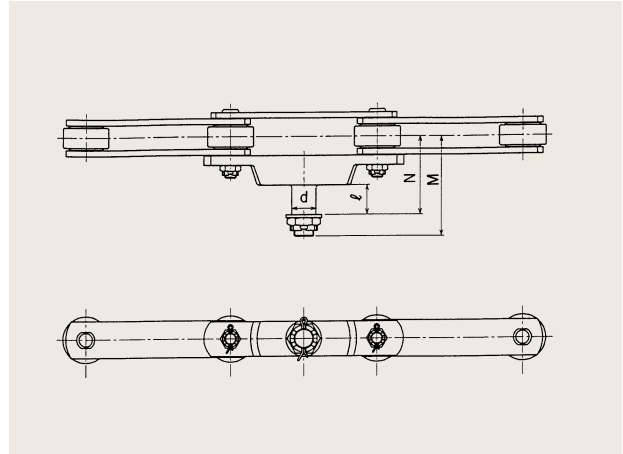
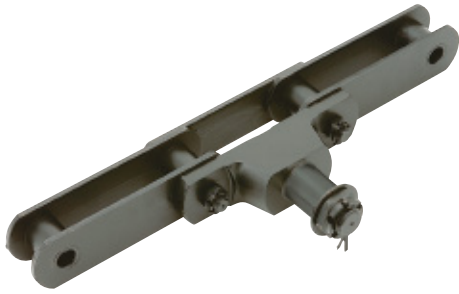
### D-22 Attachment



Note: The attachment mounting pitch for the HSS15235 is 151.8mm.

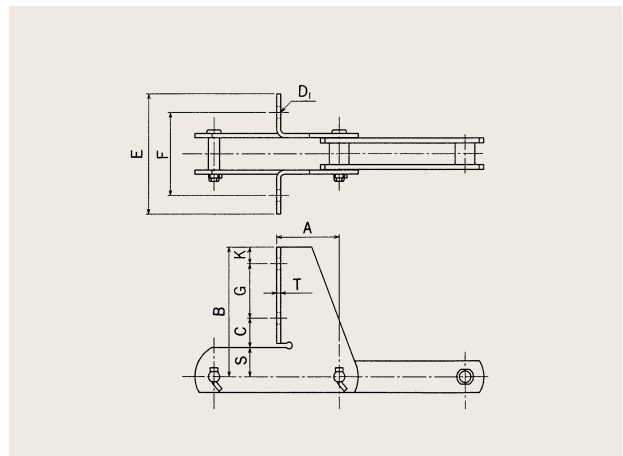
Chain No.	Dimensions (mm)						Added Mass per Attachment (kg)
	L <sub>1</sub>	L <sub>2</sub>	D <sub>1</sub>	D <sub>2</sub>	l	t	
HSS15215	29	51	13	M12	37	12	0.11
HSS15219	32	58	14	M12	44	16	0.12
HSS15225	36	64	15	M14	47	16	0.13
HSS15235	40	72	18	M16	53	19	0.19
HSS15248	55.6	85	18	M16	65.6	16	0.20

## T-1 Attachment



Chain No.	Dimensions (mm)				Added Mass per Attachment (kg)
	d	l	M	N	
HSS15215	25	30	102	80	1.2
HSS15219	30	35	108	85	1.4
HSS15225	40	44	149	122	2.8
HSS15235	40	44	151	124	3.4
HSS15248	50	50	184	145	5.1

## SF4 Attachment



Chain No.	Dimensions (mm)										Added Mass per Attachment (kg)	Notes
	A	B	C	D <sub>1</sub>	E	F	G	K	S	T		
HSS15215	76	140	38	14	145	100	60	20.0	22.0	5	1.0	Equivalent to 720
HSS15219	76	155	32	14	140	100	65	20.0	38.0	6	1.4	Standard type
	76	142.5	40	14	150	112	60	20.0	22.5	6	1.4	Equivalent to S730
HSS15225	76	162	40	18	145	100	75	20.0	27.0	6	1.6	
HSS15235	76	175	40	18	150	110	75	25.0	35.0	7	1.9	