

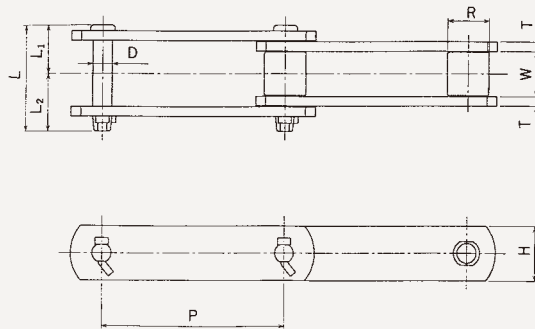
Chains for Water Treatment Systems

HSC Type Chain

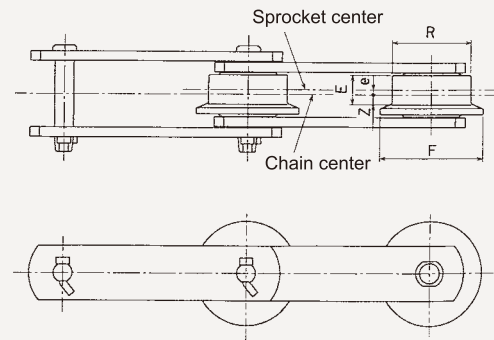
HSC type chains use 400 class stainless steel for the pins and bushes to prevent corrosion, wear and poor flexion.



S roller type



F roller type



HSC Type Chain

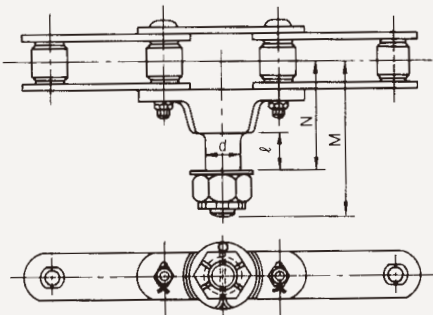
Chain No.	Pitch P (mm)	Roller diameter R(mm)				Inner link inside width W (mm)	Pin				Link plate		Average tensile strength		Assured tensile strength		Weight (kg/m)		
		Bushed	S roller	F roller	R roller		Diameter D (mm)	Length			Height H (mm)	Thickness T (mm)	(kN)	(kgf)	(kN)	(kgf)	B, S	F	R
								L (mm)	L ₁ (mm)	L ₂ (mm)									
HSC15215	152.4	25.4	25.4	50.8	50.8	30.2	11.05	69.4	31.2	38.2	38.1	6.3	147	15000	132	13500	5.5	7.9	7.5
HSC15219	152.4	29.0	29.0	50.8	50.8	30.2	14.18	73.3	32.8	40.5	38.1	6.3	216	22000	196	20000	5.8	8.2	7.7
HSC15228	152.4	34.9	34.9	65.0	65.0	37.1	15.8	87.5	40.0	47.5	44.5	7.9	275	28000	250	25500	9.1	13.3	13.1
HSC15235	152.4	39.7	39.7	70.0	70.0	37.1	18.94	97.1	44.3	52.8	50.8	9.5	373	38000	343	35000	12.6	17.3	16.4
HSC15248	152.4	44.5	44.5	80.0	80.0	57.2	22.11	119.6	55.4	64.2	63.5	9.5	510	52000	460	47000	18.0	28.3	27.3

HSC type chain (F roller type)

Chain No.	Dimensions (mm)				
	R	E	e	F	Z
HSC15215	50.8	20	3	65	7
HSC15219	50.8	20	3	65	7
HSC15228	65.0	24	4	85	8
HSC15235	70.0	25	3.5	85	9
HSC15248	80.0	38	6	95	13

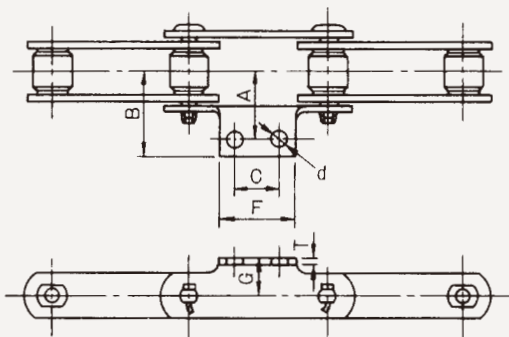
Attachments for HSC Type Chain

T-1 Attachment



Chain No.	Dimensions (mm)				Additional weight per piece (kg)
	d	ℓ	M	N	
HSC15215	25	30	102	80	1.2
HSC15219	30	35	108	85	1.4
HSC15228	40	44	149	122	2.8
HSC15235	40	44	151	124	3.4
HSC15248	50	50	184	145	4.5

A-2 Attachment



Chain No.	Dimensions (mm)							Additional weight per piece (kg)
	A	B	C	d	F	G	T	
HSC15215	50	66	60	14	90	32	6.3	0.25
HSC15219	50	66	60	14	90	32	6.3	0.25
HSC15228	60	81	60	18	100	38	7.9	0.40
HSC15235	65	86	60	18	100	45	9.5	0.55
HSC15248	80	105	60	18	100	55	9.5	0.65

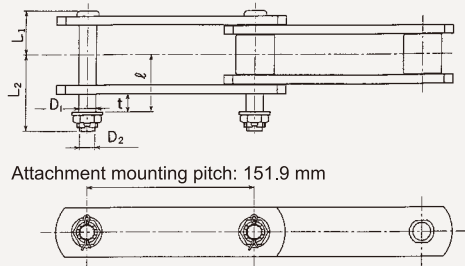
⚠ Caution

- If you need a product with special dimensions that is not listed in the catalog, please contact us.

Chains for Water Treatment Systems

Attachments for HSC Type Chain

D-22



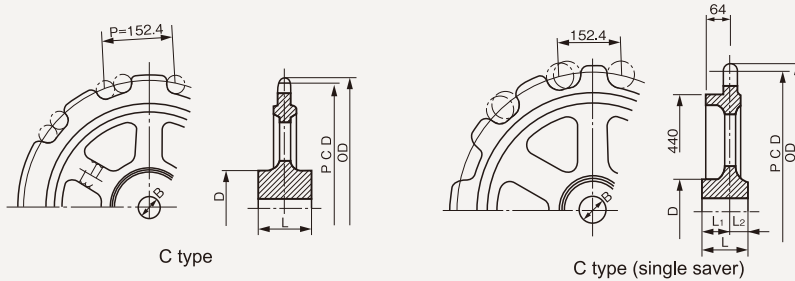
Note: The HSC15235 attachment mounting pitch is 151.8 mm.



D-22 Attachment

Chain No.	Dimensions (mm)						Additional weight per piece (kg)
	L ₁	L ₂	D ₁	D ₂	l	t	
HSC15219	32.8	59	13.5	M12	44.3	16	0.12
HSC15228	40.0	68	15.5	M14	51.1	16	0.13
HSC15335	44.5	74	18.0	M16	54.4	16	0.19
HSC15248	55.4	85.4	18.0	M16	64.4	16	0.25

Sprockets for HSC Type Chain



Steel Chain Sprockets

Chain No.	No. of teeth	Pitch circle diameter P.C.D.(m)	Exterior O.D.(m)	Material	Single saver	Shaft hole diameter (mm)		Boss (mm)				Weight (kg)
						Pilot hole	Max.	Diameter D	Width L ₁	Width L ₂	Width L	
HSC15228-B,S	11	540.9	565	FCD600	C type with saver	70	125	200	80	40	140	71
		540.9	565									65
HSC15235-B,S	11	540.9	569	FCD600	C type with saver	70	125	200	80	40	140	71
		540.9	569									66
HSS15225-B	11	540.9	562	SCS2	C type with saver	70	125	200	80	40	140	67
		540.9	562									62
		540.9	562	FCD600	C type with saver	70	125	200	80	40	140	69
		540.9	562									63
HSS15235-B	11	540.9	566	SCS2	C type with saver	70	125	200	80	40	140	70
		540.9	566									65
		540.9	566	FCD600	C type with saver	70	125	200	80	40	140	74
		540.9	566									68

Caution

· If you need a product with special dimensions that is not listed in the catalog, please contact us.