

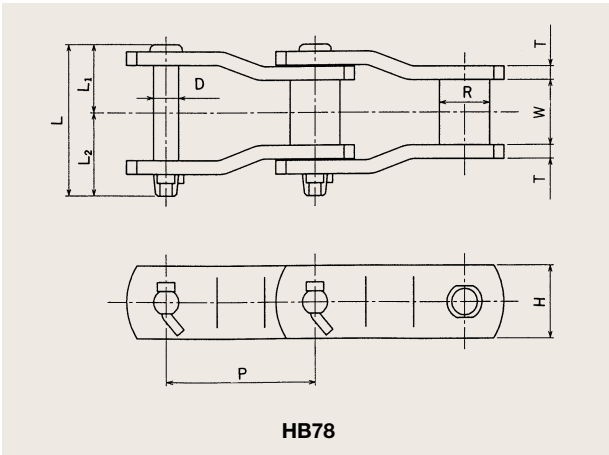
Chains for Water Treatment Systems

HB78 Stainless Bushed Chains

HB78 stainless bushed chains have come to be widely used as drive chains for sludge collectors, because of their superior corrosion resistance. These chains have high dimensional precisions, delivering adequate tensile strength at light weight, together with superior wear and corrosion resistance.



HB78



HB78

(mm)

Chain No.	Pitch P (mm)	Bush Dia. R (mm)	Inner Width W (mm)	Pin			Link Plate		Average Tensile Strength		Assured Tensile Strength		Mass (kg/m)	
				Dia. D (mm)	Length		Height H (mm)	Thickness T (mm)	(kN)	(kgf)	(kN)	(kgf)		
					L (mm)	L ₁ (mm)								L ₂ (mm)
HB78	66.27	22.23	28.6	11.17	66.5	30.1	36.4	31.8	6	106.9	10900	93.1	9500	5.74

(in)

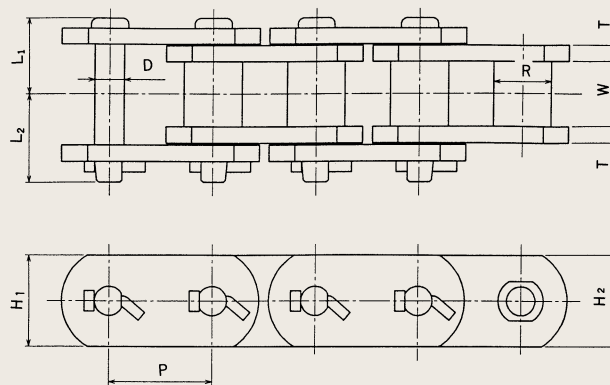
Chain No.	Pitch P (in)	Bush Dia. R (in)	Inner Width W (in)	Pin			Link Plate		Average Tensile Strength		Assured Tensile Strength		Mass (lbs/ft)
				Dia. D (in)	Length		Height H (in)	Thickness T (in)	(lbs)	(lbs)			
					L (in)	L ₁ (in)					L ₂ (in)		
HB78	2.609	0.875	1.126	0.44	2.618	1.185	1.433	1.252	0.236	24000	21000	3.8	

Chains for Water Treatment Systems

Drive Chains

HB type Stainless Bushed Chains

Standard roller chains were used in the past for sludge collectors, but recently it has been more common to use HB type bushed stainless steel chains, which offer better wear resistance. Pitch, bush diameter and width between internal links are the same as for standard roller chains. Also, the HBD type is a double-pitch version of the HB type.



Chain No.	Pitch P (mm)	Bush Dia. R (mm)	Inner Width W (mm)	Pin			Link Plate			Average Tensile Strength		Assured Tensile Strength		Mass (kg/m)
				Dia. D (mm)	Length L1 (mm)	Length L2 (mm)	Height H1 (mm)	Height H2 (mm)	Thickness T (mm)	(kN)	(kgf)	(kN)	(kgf)	
HB120	38.1	22.23	25.40	11.11	28.4	33.7	31.8	31.8	6	100	10200	89	9100	7.4
HBD120	76.2			6.3										
HB140	44.45	25.40	25.40	12.65	29.4	34.7	38.1	38.1	6	147	15000	127	13000	9.1
HBD140	88.9			6.8										
HB160	50.8	28.58	31.70	14.23	38.0	42.6	40.0	44.5	8	233	23800	196	20000	12.4
HBD160	101.6			9.4										
HB200	63.5	39.69	38.10	19.85	47.9	55.7	52.0	57.2	10	353	36000	304	31000	21.2
HB240	76.2	47.60	47.63	23.81	56.7	65.3	59.0	63.5	12	451	46000	392	40000	30.3

Note: When selecting standard roller chain sprockets for use with HBD type chains, use sprockets with at least 30 teeth.

