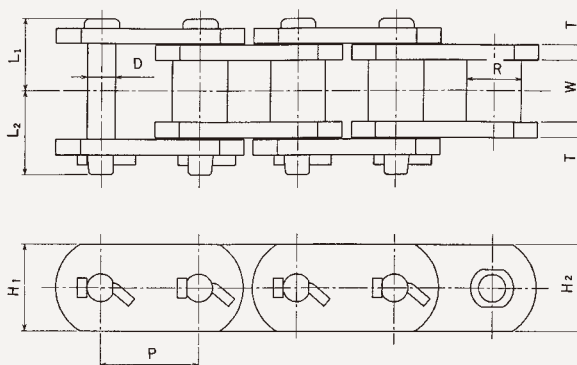


Drive Chains

HB Type Stainless Bushed Chain

Standard roller chains were used in the past for sludge collectors, but recently it has been more common to use HB type stainless bushed chains, which offer better wear resistance. Pitch, bush diameter and width between internal links are the same as for standard roller chains. Also, the HBD type is a double-pitch version of the HB type.



Chain No.	Pitch P (mm)	Bushing diameter R (mm)	Inner link inside width W (mm)	Pin			Link plate			Average tensile strength		Assured tensile strength		Weight (kg/m)
				Diameter D (mm)	Length L1 (mm)	Length L2 (mm)	Height H1 (mm)	Height H2 (mm)	Thickness T (mm)	(kN)	(kgf)	(kN)	(kgf)	
HB120	38.1	22.23	25.40	11.1	28.4	33.7	31.8	31.8	6	108	11000	89	9100	7.4
HBD120	76.2													6.3
HB140	44.45	25.40	25.40	12.65	29.4	34.7	38.1	38.1	6	147	15000	127	13000	9.1
HBD140	88.9													6.8
HB160*	50.8	28.58	31.70	14.23	38.0	42.6	40.0	44.5	8	233	23800	196	20000	13.1
HBD160	101.6													9.4
HB200*	63.5	39.69	38.10	19.85	47.9	55.7	52.0	57.2	10	353	36000	304	31000	21.2
HB240*	76.2	47.60	47.63	23.81	56.7	65.3	59.0	63.5	12	451	46000	392	40000	30.3

Note: When selecting a standard type roller chain sprocket for an HBD type chain, make sure to use at least 30 teeth.
We can also make this product with class 300 stainless steel or duplex stainless steel.

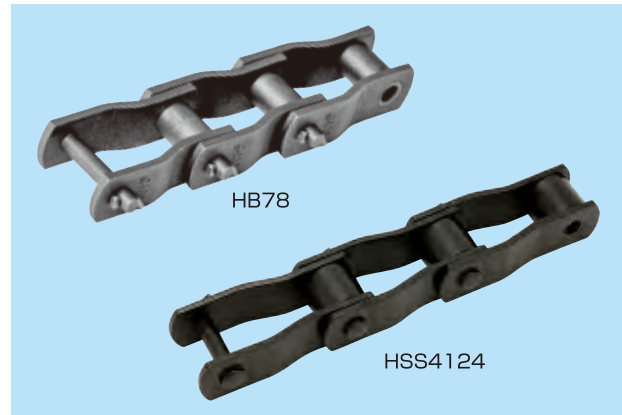


Installation examples

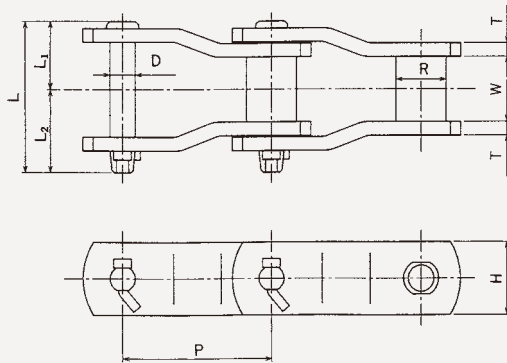
Chains for Water Treatment Systems

HB78/HSS4124 Stainless Bushed Chain

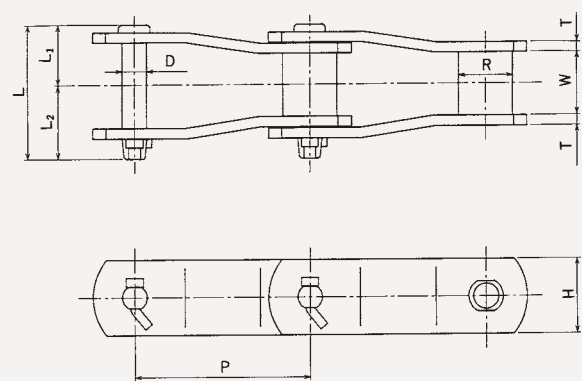
HB78/HSS4124 stainless bushed chains have come to be widely used as drive chains for sludge collectors, because of their superior corrosion resistance. These chains have high dimensional precisions, delivering adequate tensile strength at light weight, together with superior wear and corrosion resistance.



HB78



HSS4124



Chain No.	Pitch P (mm)	Bushing diameter R (mm)	Inner link inside width W (mm)	Pin				Link plate		Average tensile strength		Assured tensile strength		Weight (kg/m)
				Diameter D (mm)	Length			Height H (mm)	Thickness T (mm)	(kN)	(kgf)	(kN)	(kgf)	
					L (mm)	L ₁ (mm)	L ₂ (mm)							
HB78	66.27	22.2	28.6	11.17	66.5	30.1	36.4	31.8	6	108	11000	93	9600	6.0
HSS4124	103.2	43.7	37.0	14.5	78.6	35.8	42.8	44.0	6	186	19000	167	17100	10.5