

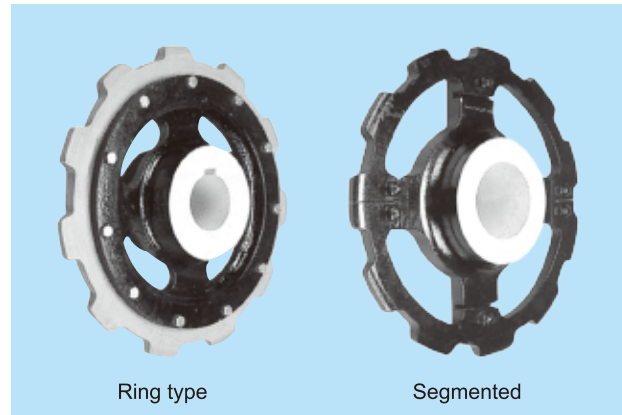
Assembled Sprockets

Assembled sprockets come in segmented and ring types.

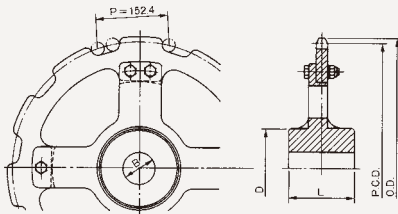
1. Segmented type: Tooth tips are of cast stainless steel and bosses are of ductile cast iron.
2. Ring type: The tooth tips are of stainless steel or plastic and bosses are of ductile cast iron.

Assembled sprockets also help to achieve similar lifespan extension in stainless chains.

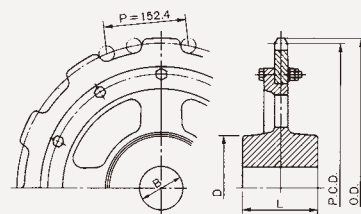
For stainless the boundary between the tooth tip and the boss is treated to prevent electrolytic corrosion.



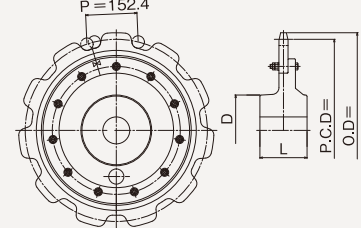
Segmented Type Sprocket



Ring Type Sprocket



HPS720S
PS720S



Resin Sprockets and Stainless Steel Sprockets

Chain No.	No. of teeth N	Pitch circle diameter P.C.D. (mm)	Outer diameter O.D. (mm)	Type	Shaft hole diameter B (mm)		Boss (mm)		Weight (kg)
					Pilot hole	Max.	Diameter D	Width L	
SAV15211-B	11	540.9	557	C type	80	125	200	140	(53) 55
	11	540.9	557	C type (saver)	80	125	200	140	63
SAV15206-B	11	540.9	565	C type (saver)	80	125	200	140	60
HSS15215-B HSS15210-B	11	540.9	558	C type	80	125	200	140	(53) 57
HSS15219-B SAV15215-B SAV715 SAV15219-B OSV15215-B OSV15219-B HSS15213-B SAV15213-B	11	540.9	560	C type	80	125	200	140	(55) 57
HSS15219-B ^{special}	11	540.9	562	C type	110	150	230	130	(58) 60
	11	540.9	562	C type (saver)	110	150	230	130	70
HPS/PS720S	11	540.9	568	C type	80	125	210	140	(55)

Note: The information in parentheses () indicates the weight of a product with resin tooth tips.
Sprockets can be painted for an additional fee.