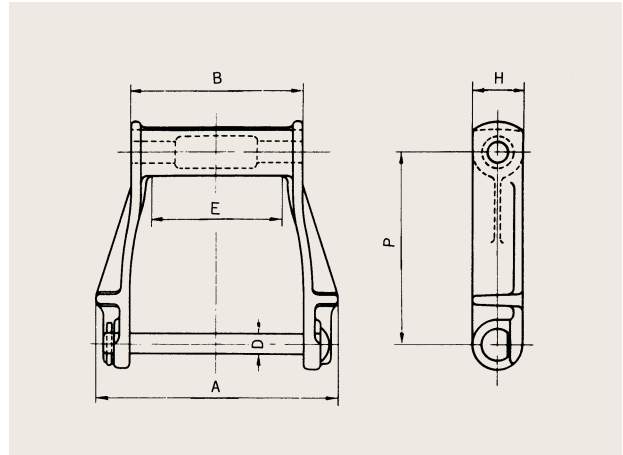


Cast Chains

Drag Chains

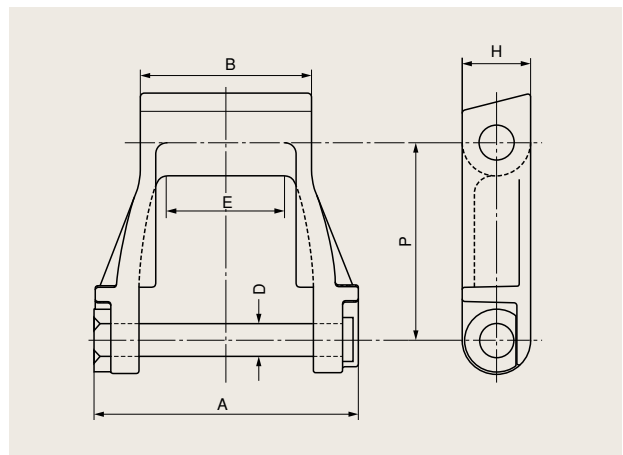
Drag chains are designed with wear resistant structures, using heavy, wide bottomed links. Use SD drag chains when particularly high wear resistance is required.

DC type



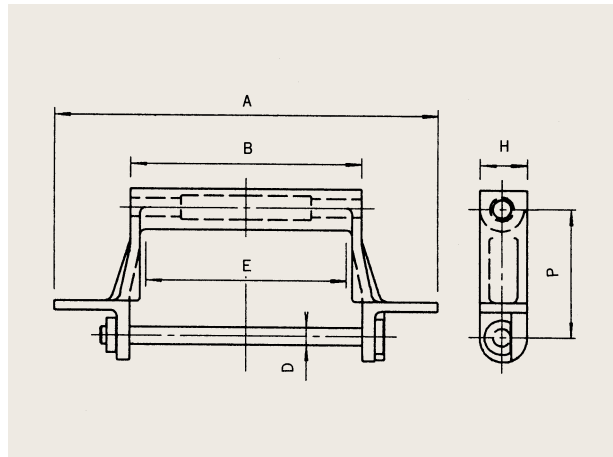
Chain No.	Pitch P		Dimensions (mm)					Average Tensile Strength		Maximum Allowable Strength		Mass (kg/Link)
	(mm)	(in)	A	B	D	E	H	(kN)	(kgf)	(kN)	(kgf)	
DC507	127.0	5	187	143	16	113	38	143	14600	18.6	1900	2.05
DC607	152.4	6	190	135	16	105	38	143	14600	18.6	1900	2.16
DC613	152.4	6	314	270	16	240	38	143	14600	18.6	1900	3.31
DC816	203.2	8	422	368	19	330	45	194	19800	28.4	2900	7.20

SD type

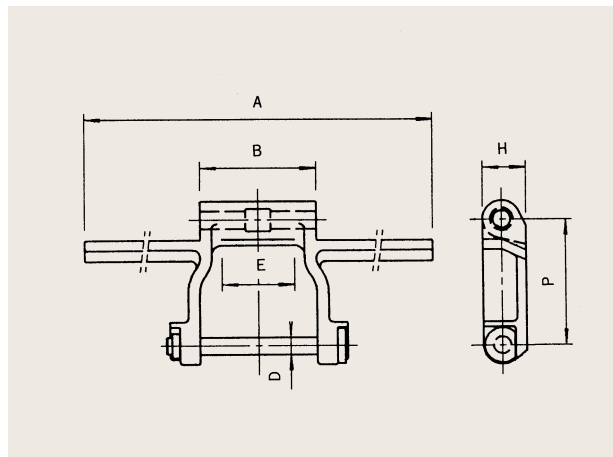


Chain No.	Pitch P		Dimensions (mm)					Average Tensile Strength		Mass (kg/Link)
	(mm)	(in)	A	B	D	E	H	(kN)	(kgf)	
SD-19 Special	152.4	6	204	133	25.4	93	51	509	52,000	5.6
SD-21SK	228.6	9	406	325	32	250	74	323	38,000	17.8

Vaned types



Chain No.	Pitch P (mm)	Dimensions (mm)					Average Tensile Strength		Maximum Allowable Strength		Mass (kg/Link)
		A	B	D	E	H	(kN)	(kgf)	(kN)	(kgf)	
SD824	203.2	608	366	28	318	75	471	48000	78.5	8000	18.9



Chain No.	Pitch P (mm)	Dimensions (mm)					Average Tensile Strength		Maximum Allowable Strength		Mass (kg/Link)
		A	B	D	E	H	(kN)	(kgf)	(kN)	(kgf)	
SD1033	250	850	230	34	184	75	981	100000	147.0	15000	29.0