

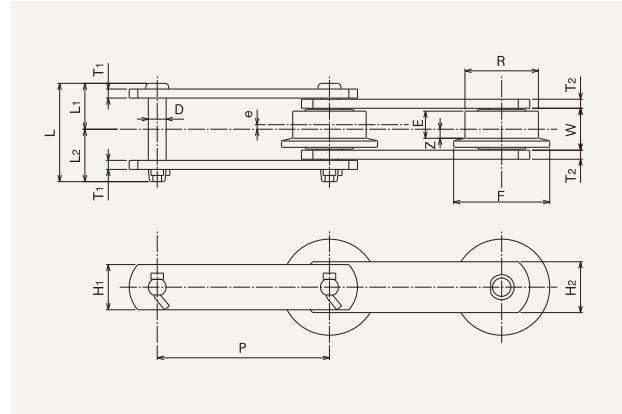
# Class 300 Stainless Chain

This chain offers improved corrosion resistance compared to class 400 stainless chains.

## HSU Type Stainless Chain

Class 300 Stainless Steel

Made of class 300 stainless steel, this chain offers improved corrosion resistance compared to class 400 stainless chains. Additionally, the HSU-DP1 series lineup uses duplex stainless steel for corrosion resistance, strength, and resistance to stress corrosion cracking. Contact us for further details.



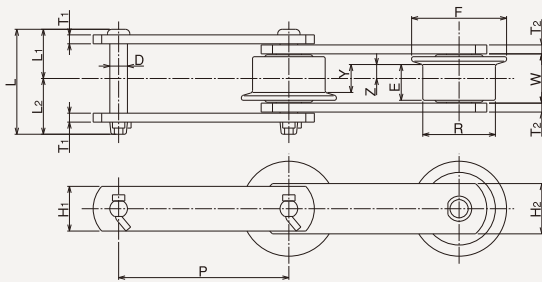
## F Roller Type Chain

An attached flange is used as an operational guide for the rail end faces. This design helps prevent chains from slipping off the rail.

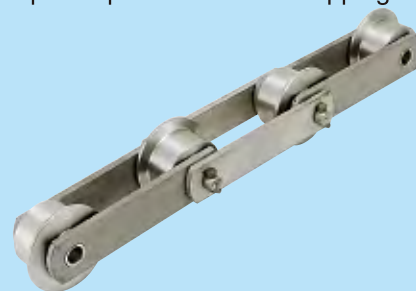
## F Roller Type Chain

Chain No.	Pitch	F roller dimensions					Inside width	Pin				Pin link		Bushing link		Average tensile strength		Assured tensile strength		Weight
		P	R	E	e	F		Z	Diameter	Length			Height	Thickness	Height	Thickness	(kN)	(kgf)	(kN)	
HSU15208-F	152.4	50	20	3	65	7	30.2	12.7	67	31.1	35.9	31.8	6	31.8	6	78	8,000	69	7,000	7
HSU15211-F	152.4	50	20	3	65	7	30.2	14.2	72	32.6	39.4	38.1	6	38.1	6	108	11,000	93	9,500	7.9
HSU15214-F	152.4	65	24	4	85	8	37.1	15.8	87	40.6	46.4	40	8	45	8	137	14,000	123	12,500	13.6
HSU15220-F	152.4	70	25	3.5	85	9	37.1	18.9	96	43.6	52.4	45	8	50	10	196	20,000	172	17,500	16.7
HSU15226-F	152.4	80	38	6	95	13	57.2	22.1	120	56.4	63.6	50	10	65	10	255	26,000	226	23,000	27.8
HSU15235-F	152.4	80	38	6	95	13	57.2	25.2	126	57.6	68.4	65	10	65	12	343	35,000	314	32,000	31.9

## F Roller Compatible Type Chain (FA type)



The F type roller flange direction is placed in an alternating direction for each one to two pieces, which helps keep the chain from slipping off the rail.



## F roller compatible type chain (FA type)

Chain No.	Pitch	F roller dimensions					Inside width	Pin				Pin link		Bushing link		Average tensile strength		Assured tensile strength		Weight
		P	R	E	Y	F		Z	Diameter	Length			Height	Thickness	Height	Thickness	(kN)	(kgf)	(kN)	
HSU15208-FA	152.4	50	27	21	65	10.5	37.2	12.7	74	34.6	39.4	31.8	6	31.8	6	78	8,000	69	7,000	8
HSU15211-FA	152.4	50	27	21	65	10.5	37.2	14.2	79	36.1	42.9	38.1	6	38.1	6	108	11,000	93	9,500	8.7
HSU15214-FA	152.4	65	32	25	85	12.5	44.1	15.8	94	44.1	49.9	40	8	45	8	137	14,000	123	12,500	14.5
HSU15220-FA	152.4	70	33	26	85	13	44.1	18.9	103	47.1	55.9	45	8	50	10	196	20,000	172	17,500	17.9
HSU15226-FA	152.4	80	38	26	95	13	57.2	22.1	120	56.4	63.6	50	10	65	10	255	26,000	226	23,000	27.8
HSU15235-FA	152.4	80	38	26	95	13	57.2	25.2	126	57.6	68.4	65	10	65	12	343	35,000	314	32,000	31.9

# Chains for Water Treatment Systems

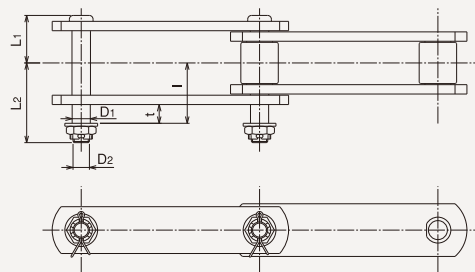
## Class 300 Stainless Chain

This chain offers improved corrosion resistance compared to class 400 stainless chains.

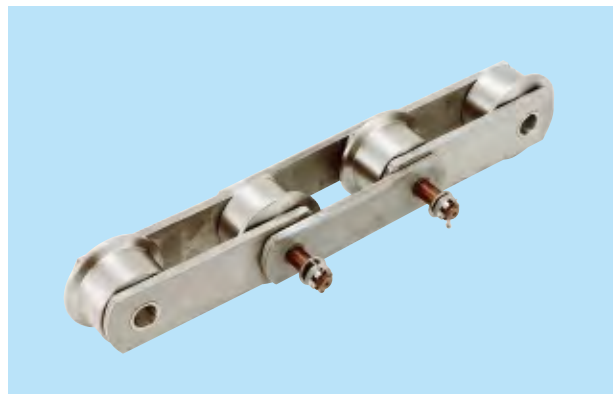
### Attachments for HSU Type Stainless Chain

Class 300 Stainless Steel

#### D-22 Attachment



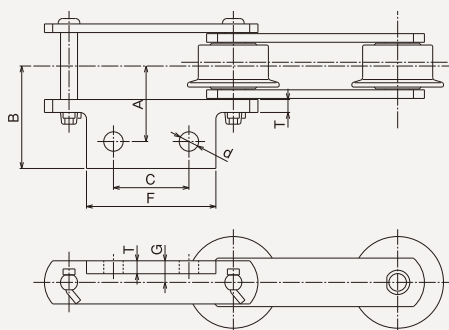
Attachment mounting pitch HSU15208-15214:151.9mm  
HSU15220-15235:151.8mm



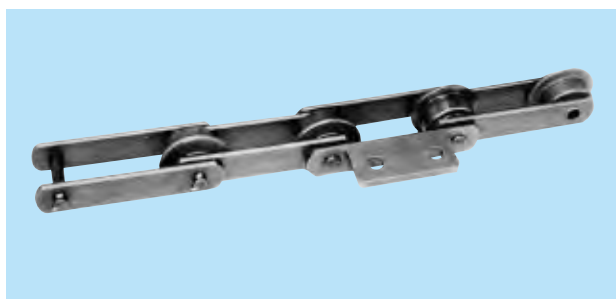
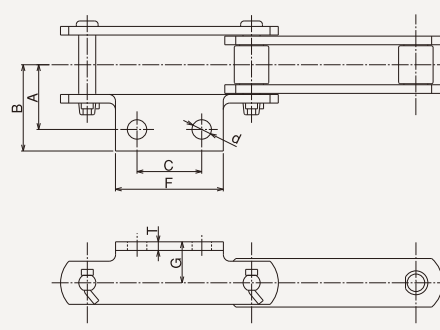
#### D-22 Attachment

Chain No.	Dimensions (mm)						Additional weight per piece (kg)
	L <sub>1</sub>	L <sub>2</sub>	D <sub>1</sub>	D <sub>2</sub>	l	t	
HSU15208	31.1	53.1	10	M8	40.1	12	0.03
HSU15211	32.6	59.2	13.5	M12	44.1	16	0.08
HSU15214	40.6	68.1	15.5	M14	51.55	16	0.12
HSU15220	43.6	72.6	18	M16	53.55	16	0.15
HSU15226	56.4	84.6	18	M16	65.6	16	0.15
HSU15235	57.6	86.6	18	M16	67.6	16	0.15

#### A-2 Attachment Type I



#### A-2 Attachment Type II



#### A-2 Attachment Type I

Chain No.	Dimensions (mm)							Additional weight per piece (kg)
	A	B	C	d	F	G	T	
HSU15208	60	80	65	14	110	16	10	0.50
HSU15211	60	80	65	14	110	19	10	0.50
HSU15214	70	95	70	18	120	20	12	0.76
HSU15220	75	100	70	18	120	22.3	12	0.80
HSU15226	80	105	70	18	120	25	15	0.92
HSU15235	80	105	70	18	120	32.5	15	0.90

#### A-2 Attachment Type II

Chain No.	Dimensions (mm)							Additional weight per piece (kg)
	A	B	C	d	F	G	T	
HSU15208	50	65	60	14	90	28	6	0.18
HSU15211	50	65	60	14	90	32	6	0.18
HSU15214	60	80	60	18	100	38	8	0.33
HSU15220	65	85	60	18	100	40	8	0.36
HSU15226	70	90	60	18	100	45	10	0.40
HSU15235	70	90	60	18	100	54	10	0.38